

Low-band and Mid-band 5G FR-1 Frequencies  
Including: Band 71, FirstNet, CBRS & Private LTE

## Sub-6 Band: 600 to 6000 MHz

For Quick, High Volume & Accurate Data Transfers.

**MobileMark**  
antenna solutions

6<sub>2</sub>6

# m m 6 2 6

MAXIMIZE THE PERFORMANCE OF YOUR 5G DEVICES WITH MOBILE MARK'S ANTENNAS BELOW:



### MULTIBAND MOBILE ANTENNAS



#### LTMWG9xx SERIES

Configurable Up to 9-Connections  
4x 5G Sub-6 with  
Up to 4x WiFi 6E & 1x GNSS



#### LTMGx08 SERIES

Configurable up to 7-connections  
2x 5G Sub-6 Cellular with  
Up to 4x WiFi & 1x GNSS



#### MXFGx08 SERIES

Narrow Footprint Design  
2x 5G Sub-6 Cellular with  
Up to 4x WiFi & 1x GNSS



#### LLPG708

Low Profile Design  
2x 5G Sub-6 Cellular with  
Up to 4x WiFi 6E & 1x GNSS

### FIXED SITE ANTENNAS



#### TMA-WB1

Single Element, 420 - 6000 MHz  
Rugged; Impact Resistant  
NATO Military Mount Option Available



#### RM-WB1

Single element, 5G Sub-6 Cellular  
Surface, Mag or Direct Mount  
Heavy Duty; Compact Profile



#### PSKN5-626

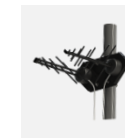
5G Sub-6 ( 600 - 6000 MHz )  
Knuckle Swivel Device Antennas  
High Performance, 5 dBi gain



#### CVL-WB2

Broadband 600 MHz – 7.2 GHz  
Use for either 5G Sub-6 or WiFi 6E  
Over Molded Waterproof Construction

### INFRASTRUCTURE ANTENNAS



#### Y42700WB-2X

Dual Log Periodic, 600 – 6000 MHz  
Slant 45° MIMO coverage  
Heavy Duty Directional Coverage



#### OD3-600/6000

Omni-directional 5G Sub-6 Cellular  
Ground plane Independent  
Option for Vibration Resistant Mobile



#### Y42700WB

Single Log Periodic, 600 – 6000 MHz  
High Gain, Wide Beamwidth  
Heavy Duty Directional Coverage

#### COVERAGE INCLUDES:

Band 71 at 617 – 698 MHz  
CBRS at 3550 – 3700 MHz  
LAA at 5 GHz

#### IDEAL APPLICATIONS:

Networks that require real-time, low latency information. Public Transportation, Industrial IoT, Smart Cities, Utilities, Shipyards, and CBRS Private LTE.