

## XW Hemispherical Outdoor Series Installation Instructions

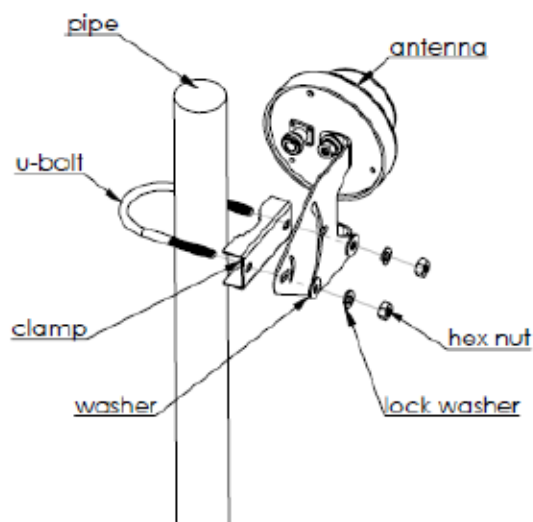
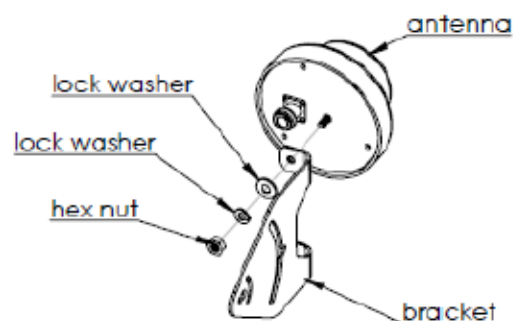
### INSTALLATION STEPS:

- Attach the bracket to the stud on the back of the antenna with supplied hardware
- Mount the antenna on mounting pipe using the U-bolt, the clamp and the supplied hardware
- Mounting kit can accommodate up to 2" (5cm) mounting pipe
- The drain holes must face downward
- Adjust tilt and position and tighten nuts to 5 lb./ft. (6.8 Nm)

NOTE: DO NOT overtighten

ATTENTION: Always wear safety glasses and follow the proper safety practices when installing this antenna.

Products covered by this guide:  
XW-24O-OH7G / XW-24O-OH7W



950-033-9-001-0218

DR: JM

APP: SM

REV. B

[Terms and Conditions](#)



Toll Free: 1-800-648-2800  
Phone: 1-847-671-6690  
Fax: 1-847-250-5120  
Email: [info@mobilemark.com](mailto:info@mobilemark.com)



Phone: +44 1543 459555  
Fax: +44 1543 459545  
Email: [inquiries@mobilemarkeurope.co.uk](mailto:inquiries@mobilemarkeurope.co.uk)



[Mobilemark.com](http://Mobilemark.com)