

XW Sector Outdoor Series Installation Instructions

INSTALLATION STEPS:

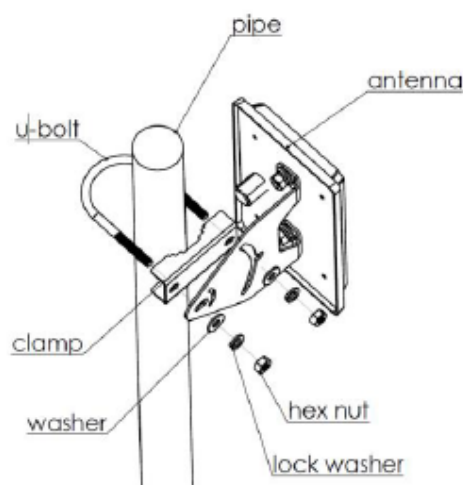
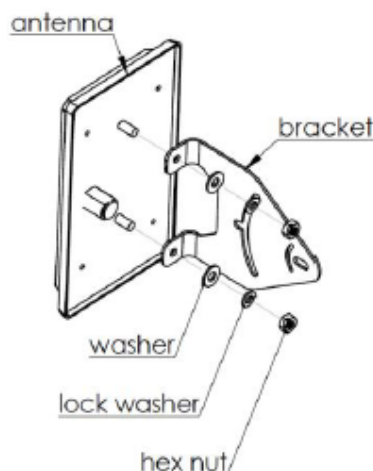
- Attach the bracket to the studs on the back of the antenna with supplied hardware
- Mount the antenna on mounting pipe using the U-bolt, the clamp and the supplied hardware
- Mounting kit can accommodate up to 2" (5cm) mounting pipe
- The drain holes must face downward
- Adjust tilt and position and tighten nuts to 5 lb./ft. (6.8 Nm)

NOTE: DO NOT overtighten

ATTENTION: Always wear safety glasses and follow the proper safety practices when installing this antenna.

Products covered by this guide:

XW-24/5XO-FPS-711 / XW-24O-FPS11 / XW-5XO-FPS10



950-034-9-001-0218

JM

REV. A

[Terms and Conditions](#)



Toll Free: 1-800-648-2800
Phone: 1-847-671-6690
Fax: 1-847-250-5120
Email: info@mobilemark.com



Phone: +44 1543 459555
Fax: +44 1543 459545
Email: inquiries@mobilemarkeurope.co.uk



Mobilemark.com