

RM-WLF

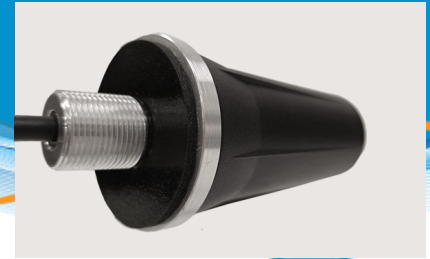
MULTIBAND LOW FREQUENCY ANTENNA

PRODUCT OVERVIEW

The RM-WLF wideband Series are 3 dBi gain broadband antennas. A ground plane is recommended for best performance. These antennas will operate over the entire 694-960 MHz spectrum, along with 1.7-2.7 GHz high frequency spectrum. The RM-WLF requires a 5/8" hole (16 mm) for mounting and is outfitted with a gasket for weather sealing. The RM-WLF-DN is available with a direct N Female connector.

A magnetic mount version is available in the MGRM-WLF. This model provides all the same performance as the RM-WLF, with a powerful magnet for less permanent installations. For glass mounting, Mobile Mark's MMF3-WLF antennas provide a no-hole installation. This model has two mounting/transfer plates that attach to the inside/outside. They attach using field proven 3M double sided tape. The short flexible whip on the MMF is fixed in the vertical position and never needs to be removed.

Visit our [eStore](#) to purchase an Antenna Online.



HEAVY DUTY SURFACE MOUNT

R M - W L F - 3 C - B L K - 1 8 0

Cable/Connector
 Color
 Cable Length in inches

Electrical Specifications	
Frequency	694 - 960 MHz 1700 - 2700 MHz
Gain	3 dBi Peak
VSWR	2:1 (894-960 2.5:1)
Max Power Rating	35 Watts (694-960 MHz) 10 Watts (1700-2700 MHz)
Impedance	50 Ohm Nominal

Mechanical Specifications	
Radome Material/Color	Black or White ABS Plastic
Cable	LL-195, 1ft (25.4 cm) Can be ordered in Longer Cable Lengths
Radome Dimension	1.69" Dia. x 3.10" Height (4.3 cm x 7.9 cm) 5/8" (1.58 cm) hole required
Weight	6.5 oz (184 g)
Connector	SMA Plug (Male)
Mounting	5/8 Dia. (1.58 cm) Feed Thru, 3/4" (1.9cm) lg thread for up to 1/4" (6.35mm) Thick Metal. 5/8" (1.58cm) hole required
Shock & Vibration	EN 61373, IEEE 1478, MIL-810G TIA-329.2-C
Operating Temperature	-40° to +85° C
Dust & Water Ingress	IP69K (Stud Mount, When Properly Mounted) IP67 (Mag-Mount, When Properly Mounted)
RoHS Compliant	Yes

HIGHLIGHTS:

- Cellular, Wi-Fi 6E
- High Performance; High Gain
- Made-in-the-USA & UK

RELATED MODELS:

- RM-WHF-DN (Direct "N" Jack Model)
- MGRM-WHF (Mag Mount Model)
- NT-MK (Universal Wall/Pole Mount Kit)
- RM-WB1 (600 - 6000 MHz, Wider Freq.)

COMMON APPLICATIONS:

- Wi-Fi 6E, CBRS & Private LTE Networks
- Cabinet Mounted
- Shipyards & Railroads
- Universities & Campuses

BANDS:

- 5G: n1, n2, n3, n5, n6, n7, n8, n12, n13, n14, n18, n20, n25, n26, n28, n29, n30, n34, n38, n39, n40, n41, n53, n65, n66, n67, n70, n80, n81, n82, n84, n85, n86, n89, n90, n91, n92, n93, n94, n95, n96, n98, n100, n101, n106
- LTE: 1, 2, 3, 4, 5, 6, 7, 8, 9, 10, 11, 12, 13, 14, 17, 18, 19, 20, 21, 23, 24, 25, 26, 27, 28, 29, 30, 33, 34, 35, 36, 37, 38, 39, 40, 41, 44, 45, 53, 53, 65, 66, 67, 68, 69, 70, 80, 81, 82, 84, 85, 86, 89, 90, 91, 92, 93, 94, 95, 96, 98, 100, 101, 106

