

SMHG944

DUAL CARRIER MULTIBAND MIMO ANTENNA

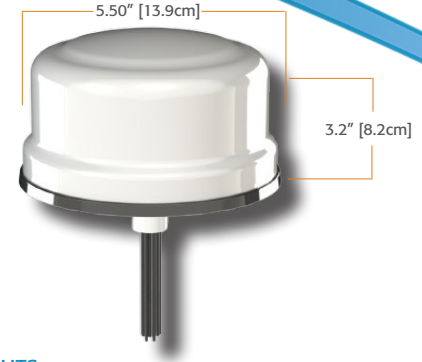
PRODUCT OVERVIEW

The SMHG944 is an 9-cable multiband antenna covering Cellular, WiFi, and GNSS. This antenna is ideal for High-Speed Mobile Cellular/WiFi communication systems.

- **Small and Powerful:** The SMHG944 features (4x) 5G Sub-6, (4x) Wifi 6e/7, and (1x) GNSS. Covering all the Cellular, WiFi and GNSS frequencies.
- **Built to last.** Capitalizing on a rugged, UV rated ASA radome, the SMHG944 is water resistant, vibration and shock resistant, making it easy to mount on a metal surface or ground plane.

Tested and trusted, Mobile Mark focuses on quality, fast delivery, and leveraging the expertise of highly skilled professionals, specializing in customizable manufacturing solutions across North America and Europe. By combining advanced technologies with comprehensive team knowledge, we ensure tailored products that meet diverse needs, all delivered efficiently to exceed expectations.

Electrical Specifications		
Frequency & Gain	5G/LTE Cables 1 - 4	617 - 960 MHz, 2 dBi Peak 1710 - 7200 MHz, 5 dBi Peak
	WiFi 6E Cables 5 - 8	2.4 - 2.5 & 4.9 - 7.2 GHz, 4 dBi Peak
	GNSS Cable 9	1561, 1575, & 1602 MHz, LNA 26 dB, 5 dBi (RHCP)
VSWR	5G/LTE	< 2.5:1 VSWR Over Range
	WiFi 6E	< 2:1 VSWR Over Range
Impedance	50 Ohm Nominal	
Power Rating	10 Watts	
GNSS	Amplifier Bias Voltage	3 to 5 VDC
	Gain	26 dB, 3 dBi
	Current	20 mA max, 10 mA typical
Mechanical Specifications		
Radome Material & Color	UV-Stable ASA, Available in Black or White	
Radome Dimension	5.50" (139 mm) in Diameter & 3.2" (82 mm) in Height	
Weight	4.25 lbs (1.93 kg)	
1ft (305 mm) Pigtail Cables & Connectors Exiting Antenna	5G/LTE	RG-316 with SMA Plugs LTE-A (Green) & LTE-B (Red)
	WiFi 6E	RG-316 with SMA Plugs (Blue)
	GNSS	RG-174 with SMA Plug (Yellow)
14ft (4.27 m) Jumper Cables & Connectors Included with antenna	5G/LTE	LL-195 with SMA Jack & SMA Plugs LTE-A (Green) & LTE-B (Red)
	WiFi 6E	LL-195 with SMA Jack & Rev Pol SMA Plugs (Blue)
	GNSS	RG-174 with SMA Jack & SMA Plug (Yellow)
Operating Temperature	-40° to +80° C	
Mounting	0.8" (2 cm) Dia. Feed Through 1.2" (3.1 cm) Long Thread for up to 0.5" (1.3 cm) Thick Surface Ground Plane Independent	
Dust & Water Ingress	IP69	
Shock & Vibration	IEEE-1478, EN 61373, MIL-STD-810G	
RoHS Compliant	Yes	



HIGHLIGHTS:

- Multiband: 4x 5G/LTE, 4x WiFi 6E, 1x GNSS
- MIMO 5G/LTE & WiFi 6E/Bluetooth
- Mobile, Surface Mount
- Rugged Construction
- Ground Plane Independent

COMMON APPLICATIONS:

- Vehicle Fleet Management
- Public Transportation
- Fixed Site Private Networks
- WiFi Data Transfer
- Advanced Multiband Routers

BANDS:

- 5G NR: n1, n2, n3, n4, n5, n6, n7, n8, n12, n13, n14, n18, n20, n25, n26, n28, n29, n30, n34, n38, n39, n40, n41, n46, n47, n48, n53, n65, n66, n67, n70, n71, n77, n78, n79, n80, n81, n82, n83, n84, n85, n86, n89, n90, n95, n96, n98, n100, n101, n102, n104, n105, n106
- LTE: 1, 2, 3, 4, 5, 6, 7, 8, 9, 10, 12, 13, 14, 17, 18, 19, 20, 22, 23, 25, 26, 27, 28, 29, 30, 33, 34, 35, 36, 37, 38, 39, 40, 41, 42, 43, 44, 46, 47, 48, 49, 52, 53, 65, 66, 67, 68, 69, 70, 71, 77, 78, 79, 80, 81, 82, 83, 84, 85, 86, 89, 90, 95, 96, 98, 100, 101, 102, 104, 105, 106, 252, 255



US Headquarters +1.847.671.6690 • US/CA Toll Free +1.800.648.2800
European Facility +44.1543.459555 • www.MobileMark.com

Moving Wireless Forward®