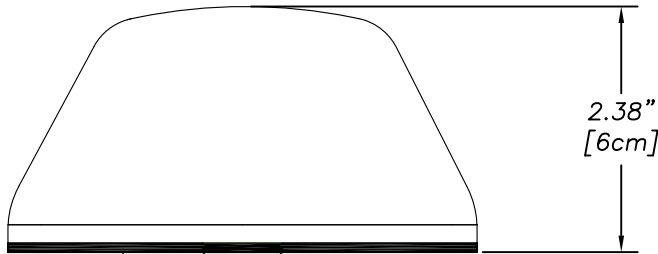
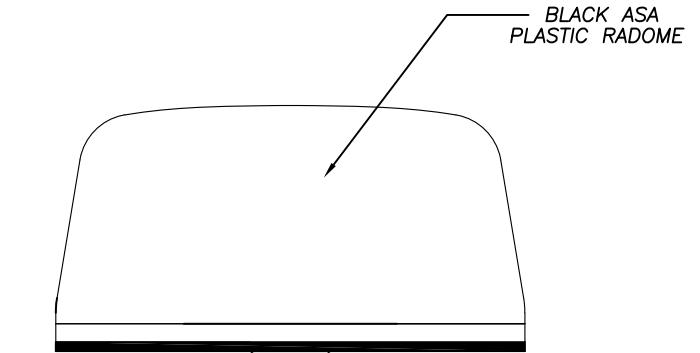


LTMG408-3C3C3C2C-BLK-180

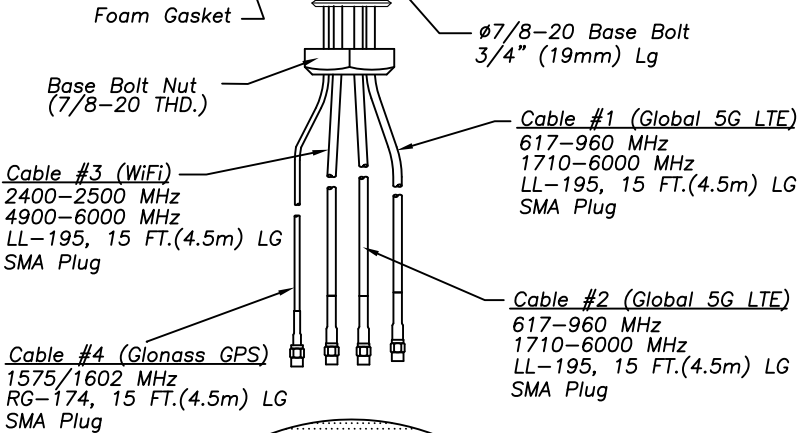
Multi-band Diversity/Mimo Antenna
2 X 617-960 MHz, 1710-6000 MHz (Global 5G LTE)
2.4-2.5GHz, 4.9-6 GHz (802.11n)
Glonass GPS 1575/1602MHz



SIDE VIEW

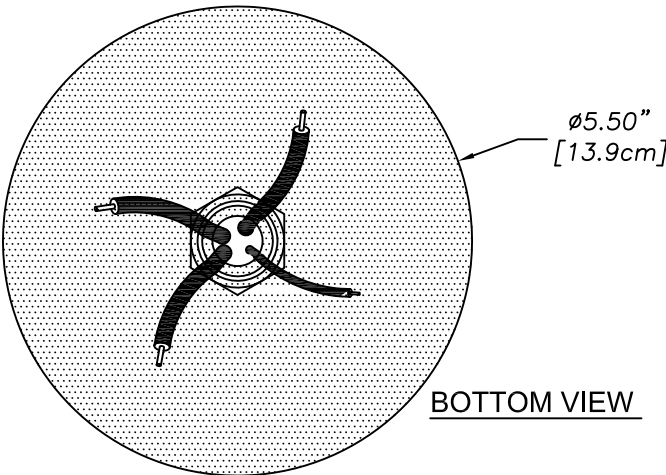


FRONT VIEW



Frequency and Cable Table

CABLE NO. 1 (LL-195 CABLE)
617-960 MHz (LTE)
1710-6000 MHz (Global 5G LTE)
CABLE NO. 2 (LL-195 CABLE)
617-960 MHz (LTE)
1710-6000 MHz (Global 5G LTE)
CABLE NO. 3 (LL-195 CABLE)
2400-2500 MHz (WiFi)
4900-6000 MHz (WiFi)
CABLE NO. 4 (RG-174)
1575/1602 MHz (Glonass GPS)



Antenna Specifications

Gain:	617-960 MHz 3dBi Peak
	1710-6000 MHz 4dBi Peak
	2.4-2.5 GHz/4.9-6 GHz 5dBi Peak
Glonass GPS	1575 MHz/1602 MHz
Amplifier Gain	16 dB
Noise Figure	1.5 dB (Typ.)
Voltage	3.3/5 VDC
Current	10mA (typ.), 20mA (max.)
**VSWR:	617-960 MHz — 2.2 MAX, <2:1 TYP.
	1710-6000 MHz — <2:1

Maximum Power:	10 Watts
Connectors/Interface:	SMA Plugs
Case:	5.50" Dia.(13.9cm) x 2.38" (6cm) High
Radome Material:	ASA UV Inhibitive Plastic
Cable	<ul style="list-style-type: none"> — cable 1 — LL-195, 15 ft.(4.5m) (617-960 MHz/1710-6000 MHz) — cable 2 — LL-195, 15 ft.(4.5m) (617-960 MHz/1710-6000 MHz) — cable 3 — LL-195, 15 ft.(4.5m) (2.4-2.5 GHz/4.9-6 GHz) — cable 4 — RG-174, 15 ft.(4.5m) (Glonass GPS 1575/1602 MHz)
Impedance:	50 OHM Nominal
Water Ingress:	IPX7 (when properly mounted)
Shock & Vibration:	IEEE1478, EN61373, MIL-810G, TIA 329.2-C
Mounting:	7/8" (22.2mm) Dia. Feed through. 3/4" (19mm) lg. thread for up to 1/2" (12.7mm) thick surface
Operating Temperature:	-40° to +80° C

** Gain and VSWR measured with 1 ft cable on 24" Ground Plane RP 6/12/19 RevD



US OFFICE & HEADQUARTERS: 1140 W THORNDALE AVE, ITASCA, IL 60143
 TEL: (847) 671-6690 * FAX (847) 250-5120

UK OFFICE: 8 MIRAS BUS PARK, KEYS PARK ROAD, HEDNESFORD WS12 2FS, UK.
 UK TEL: (+44) 1543-459555 FAX (+44) 1543-459545
 VISIT OUR WEBSITE AT WWW.MOBILEMARK.COM

