

LPD Series

LOW PROFILE VHF MULTIBAND ANTENNAS

PRODUCT OVERVIEW

The LPD Series is a Low-Profile Antenna Solution that comes in two different VHF Frequencies. The antenna is rated for 500 watts and can handle high-powered radios. It is specifically designed for transit vehicles that require low overhead clearance. It is an ideal solution for Public Safety Mobile Applications, such as an ambulance, that might have height restrictions. They are factory tuned and tested to provide excellent frequency coverage.

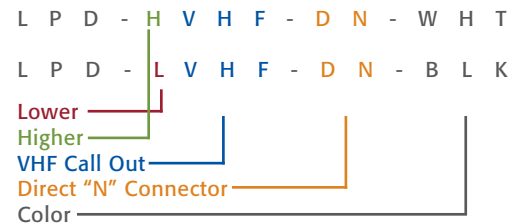
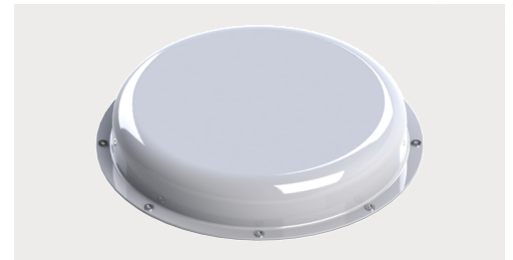
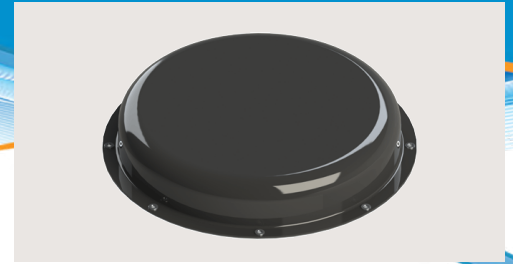
The LPD Series is made from a high impact resistant polycarbonate resin to protect against harsh outdoor environments. It terminates with an "N" Jack Female connector and is surface mounted at 8 places. These mounting holes are 15/32" (12 mm) in diameter, and 45° apart.

Please Note that the Gain and VSWR are measured on a 3 FT Ground Plane. In addition, a 10 MHz Bandwidth is possible with the appropriate Ground Plane arrangement.

Visit our [eStore](#) to customize an Antenna online.

Electrical Specifications	
Frequency & Gain	VHF LPD-LVHF-DN at 145-161 MHz, 2 dBi LPD-HVHF-DN at 162-172 MHz, 2 dBi
Bandwidth	6 MHz
VSWR	2:1 Max
Impedance	50 Ohm Nominal
Power Rating	500 Watts

Mechanical Specifications	
Radome Material & Color	ASA UV-Inhibitive Plastic, Available in White or Black
Radome Dimension	20" (508 mm) in Diameter & 3.25" (83 mm) in Height
Standard Connectors	Direct "N" Jack (Female)
Operating Temperature	-40° to +85° C
Surface Mounting	Flange Mounting in 8 Places. These mounting holes are 15/32" (12 mm) in diameter, and 45° apart.



HIGHLIGHTS:

- Low-Profile VHF Coverage
- Factory Tuned to Specified Frequency
- High Performance; High Gain
- Made-in-the-USA & UK

RELATED MODELS:

- A1611BN Series (150-174 MHz & 220-225 MHz)
- LPD-LVHF-DN
- LPD-HVHF-DN

COMMON APPLICATIONS:

- Ambulances
- Fire Engines
- Railroad Cars
- Construction Equipment
- Buses
- Airport Vehicles
- Public Safety Applications
- VHF for Land Mobile Radio



US Headquarters +1.847.671.6690 • US/CA Toll Free +1.800.648.2800
 European Facility +44.1543.459555 • www.MobileMark.com

Moving Wireless Forward®