

ECO5-2400/5500

TRI-BAND WIFI 6E ECONOMY OMNI

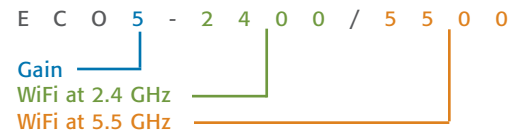
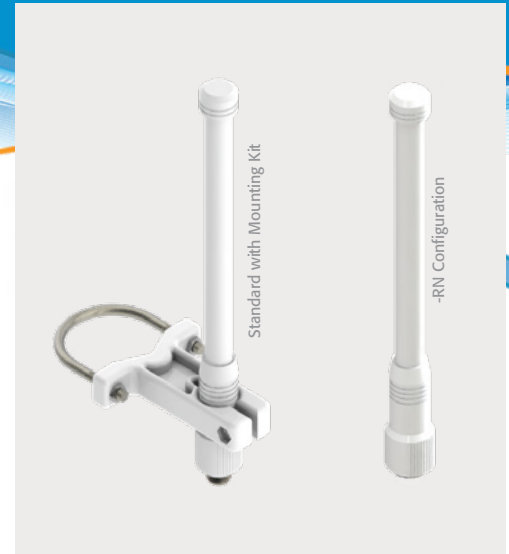
PRODUCT OVERVIEW

The ECO5-2400/5500 is a Tri-Band WiFi 6E Economy antenna with an omnidirectional radiation pattern. It is a high-performance, high-output solution for indoor or outdoor usages without the need of a ground plane. This antenna operates on the 2.4, 5, and 6e bands, with a gain of 5 dBi. Our high-performance Wi-Fi 6e series takes full advantage of the 1.2 GHz band from 6.0 to 7.2 GHz and is backward compatible with Wi-Fi 2.4 and 5. The unibody fiberglass radome design is simple and cost-effective in protecting antenna element yet very rugged to withstand harsh environments. In addition, this specific model terminates with an integrated "N" Female Jack, however it can be customized with a recessed "N" Plug (Male). With the provided mount kit, integrators can effortlessly mount the ECO5 to the outer diameter of a 2-inch pipe within seconds. It provides a seamless integration offering exceptional flexibility and convenience.

Visit our [eStore](#) to customize an Antenna online.

Electrical Specifications	
Frequency & Gain	2.4 - 2.5 & 4.9 - 7.2 GHz, 5 dBi Gain
Vertical Beamwidth (-3 dB)	30° at 5500 MHz 22° at 2450 MHz
VSWR	2:1 Max
Impedance	50 Ohm Nominal
Power Rating	25 Watts

Mechanical Specifications	
Radome Material & Color	Fiberglass, Available in White
Dimension	9.50" (241 mm) in Length, 1.03" (26 mm) Diameter
Net Weight	8 oz (0.5 lbs) (226 g)
Connector	Standard: "N" Female Jack Termination Specify ECO5-2400/5500RN for Configuration with Recessed "N" Plug (Male)
Mounting Kit Included	Mounts Up to 2.0" OD (Outer Diameter) of a Pipe
Operating Temperature	-40° to +80° C
Lightening Protection	External Recommended
Wind Survivability	100 mph minimum 100 mph with 1/2" radial ice
Shock & Vibration	EN 300 019-2-4, IEC 60068
Dust/Water Ingress	IPX5
RoHs Compliant	Yes



HIGHLIGHTS:

- Broad Coverage 2.4-2.5 & 4.9-7.2 GHz
- Ground Plane Independent
- Mounting Kit Included
- 802.11 Protocols including 802.11ax
- High Performance; High Gain
- Made-in-the-USA & UK

RELATED MODELS:

- ECO5-2400/5500RN (Recessed "N" Plug)
- DOD5-2400/5500 (WIFI 6)

COMMON APPLICATIONS:

- WiFi Access Points
- WiFi Data Transfers
- Industrial IoT



US Headquarters +1.847.671.6690 • US/CA Toll Free +1.800.648.2800
European Facility +44.1543.459555 • www.MobileMark.com

Moving Wireless Forward®