

Technical Specification

806-960MHz, 3dBd / 5dBi Gain

BASE STATION ANTENNA

Reliable Performance: Rated at 100 watts, you can expect years of continuous service.

Construction: The radiating elements are collinear stacked and phased copper alloy tubes. They are encased in an ABS radome for total environmental protection.

Weatherproof: The ABS radome is ultraviolet inhibited. The mounting sleeve is ABS plastic with an extruded drain system to allow for any condensation dissipation.

Lightweight: These antennas are lightweight at less than 2 lbs. but are designed to easily withstand winds of over 125 MPH.

Simple Installation: Using the optional BNT mounting kit, installation takes only minutes.

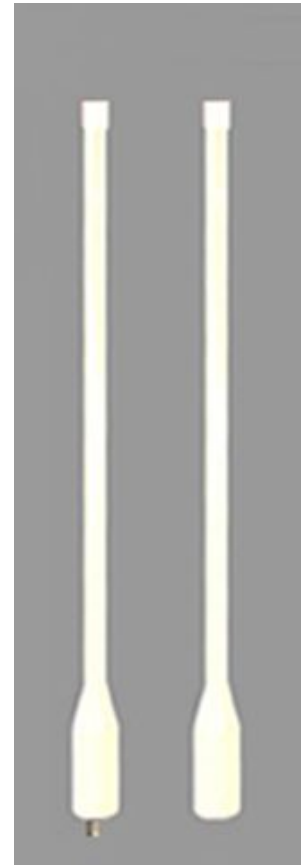
Termination: This antenna is available with either an "N" female or "N" male termination.

ELECTRICAL SPECIFICATIONS:

PART NO.	FREQUENCY:
BXX800-06	806-896MHz
BXX800-96	896-960MHz
BXX915	900-930MHz
GAIN:	3dBd / 5dBi
VERTICAL BEAMWIDTH:	35°
BANDWIDTH:	100MHz@ <2:1
POWER RATING:	100 watts
IMPEDANCE:	50 ohms

MECHANICAL SPECIFICATIONS:

ANTENNA LENGTH:	21" (53cm)
WEIGHT:	2 lbs (5cm)
RADIATOR:	Copper alloy elements
RADOME:	White UV inhibited ABS
MOUNTING SLEEVE:	White UV inhibited ABS
SLEEVE DIAMETER:	1.35" (3.4cm)
FLAT PLATE AREA:	.08 ft ²
WIND RATING:	125 MPH (201kph)
WIND LOAD:	5.4 lbs. (2.4kg)
TERMINATION:	BNF800S "N" FEMALE BNM800S "N" MALE



Vertical Pattern

