

Technical Specification

806-960 MHz 6dB Gain

Y2283

YAGI ANTENNA

High Performance: These antennas provide 6dBd, wide band performance.

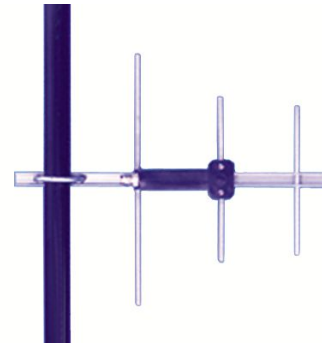
Rugged and weatherproof: The construction of our standard duty yagis feature 1/2" aluminum U channel with 1/4" solid elements. All exposed areas are coated with UV polyester. The balun assembly is filled and sealed with elastomeric thermoplastic.

Lightweight and Durable: These antennas are easily installed by one person.

Termination Options:

Type A: 12" (30cm) Teflon pigtail with N connector.

Type B: Direct TNC connection to the balun.



ELECTRICAL SPECIFICATIONS:

GAIN:	6dBd	F/B 15dB
FREQUENCY:	-06	806-896MHz <2:1 VSWR
	-24	824-896MHz <2:1 VSWR
	-96	896-960MHz <2:1 VSWR
	-915	900-930MHz <2:1 VSWR

VERT BEAMWIDTH: 70°

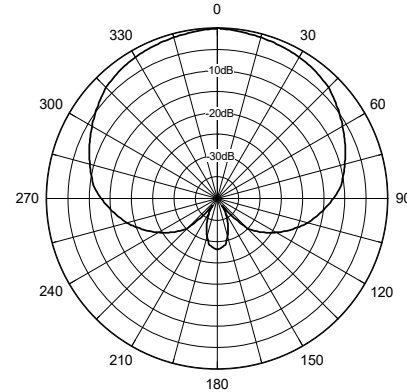
HORIZ BEAM WIDTH: 90°

RATING : 150 watts, 50 ohms impedance

MECHANICAL SPECIFICATIONS:

MATERIAL:	1/2" (1.27cm) aluminum U channel boom 1/4" (6.3mm) solid elements
FINISH:	UV inhibited polyester coat
LENGTH:	15" (38cm)
WEIGHT:	<2 lbs. (5cm)
MOUNT:	1 5/8" (1.4cm) mast, stainless hardware
FLAT PLATE AREA:	.08 ft ²
WIND RATING:	125 MPH (201kph)
WIND LOAD:	4.7 lbs. (2.4kg)

Horizontal Pattern



Vertical Pattern

