

Technical Specification
806-960 MHz 12.2dB Gain

Y33810
HEAVY DUTY YAGI ANTENNA

High Performance: This series of antennas provide 12.2dBd, with wide band performance.

Rugged and weatherproof: The construction of our heavy duty yagis feature 1"aluminum U channel with 3/8" solid elements. All exposed areas are coated with UV polyester. The balun assembly is filled and sealed with elastomeric thermoplastic.

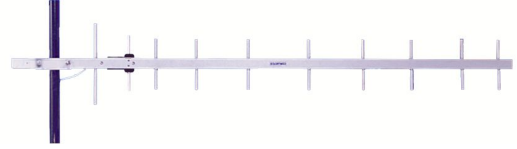
Lightweight and Durable: These antennas are easily installed by one person.

Termination Options:

Type A: 12" Teflon pigtail with N connector.

Type B: Direct TNC connection to the balun.

Type D: Direct N connection to the balun.



ELECTRICAL SPECIFICATIONS:

GAIN: 12.2dBd F/B 20dB

FREQUENCY:
-06 806-866MHz <2:1 VSWR
-25 825-896MHz <2:1 VSWR
-96 896-960MHz <2:1 VSWR
-915 900-930MHz <2:1 VSWR

VERT BEAMWIDTH: 45°

HORIZ BEAM WIDTH: 50°

RATING : 300 watts, 50 ohms impedance

MECHANICAL SPECIFICATIONS:

MATERIAL: 1" (2.54cm)aluminum U channel boom
3/8" (9.2mm) solid elements

FINISH: UV inhibited polyester coat

LENGTH: 48" (1.2m)

WEIGHT: <4 lbs. (1.8kg)

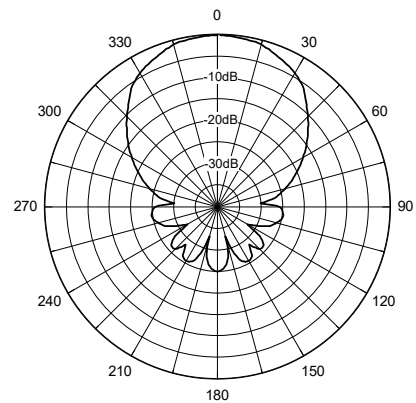
MOUNT: 2 3/8" mast, stainless hardware

WIND RATING: 125 MPH + (201kph)

FLAT PLATE AREA: .45 ft²

WIND LOAD: 18.15lbs. (8.2kg)

Horizontal Pattern



Vertical Pattern

