

## Technical Specification 1710/1880 MHz YAGI

Y441812  
YAGI ANTENNA

**High Performance:** This 12 element yagi antenna provides 10dBd gain with wide band performance.

**Rugged and weatherproof:** Our enclosed radome construction provides excellent weather protection for our solid element U channel yagis. The radome is constructed of UV inhibited ABS. The heavy duty mounting plate is extruded aluminum. Stainless steel V bolts are provided for long term reliability and resistance to corrosion.

**Lightweight and Durable:** This yagi antenna is easily installed by one person, yet is designed to withstand 125 MPH winds.

### Termination Options:

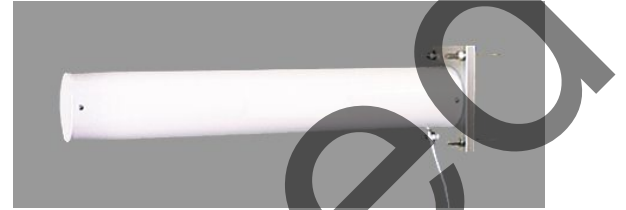
**Type A:** 12" Teflon pigtail with N connector.

### ELECTRICAL SPECIFICATIONS

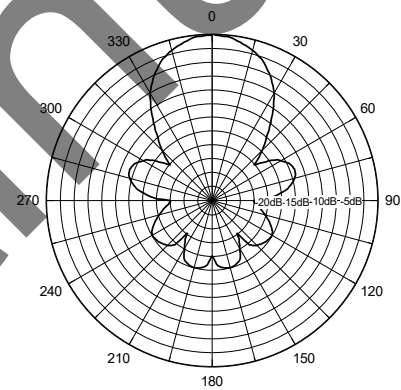
**GAIN:** 12dBi / 10dBd  
**FREQUENCY:** 1710-1880MHz  
**F to B RATIO:** 20dB  
**BANDWIDTH:** 170MHz  
**VSWR:** <2:1  
**VERT BEAMWIDTH:** 35°  
**HORIZ BEAMWIDTH:** 38°  
**POWER RATING:** 150 watts  
**IMPEDANCE:** 50 ohms

### MECHANICAL SPECIFICATIONS

**MATERIAL:** 1/2" (1.27cm) aluminum U channel boom  
 3/16" solid elements  
**RADOME:** 3" (7.6cm) UV inhibited ABS  
**LENGTH:** 19" (48cm)  
**WEIGHT:** 2 lb. (907g)  
**MOUNTING:** 2 1/2" (6.35cm) mast maximum  
**FLAT PLATE AREA:** .26 ft<sup>2</sup>  
**WIND RATING:** 125 MPH (201kph)  
**WIND LOAD:** 17.6 lbs.(7.9kg)



Horizontal Pattern



Vertical Pattern

