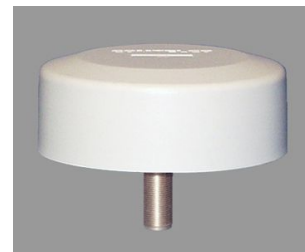


**Performance:** These antennas provide ultra wideband coverage for ceiling mounted installations or tamperproof bulkhead applications. They operate anywhere in the 806/940MHz and 1850/1990MHz frequency bands. They can be mounted upside down for ceiling applications or conventionally for bulkhead cabinet mounting. They provide better than 3dBi gain. They have a high power handling capacity of 100 watts.

**Stylish and Durable:** These antennas are manufactured using the finest materials and finishes available. The covers are molded using UV inhibited ABS plastic and are available in a white finish or black finish. When ordered in white they blend in well with existing ceiling tile installations.

**Reliable:** The termination of these is an "N" type connector for very low loss and easy installation.

**Patterns:** These antennas provide omni-directional operation with dome like pattern.



**ELECTRICAL SPECIFICATIONS:**

**FREQUENCY RANGE:** 806-940MHz  
1850-1990MHz  
**GAIN:** >3dBi  
**VSWR:** <2:1 @ 100MHz  
**IMPEDANCE:** 50 ohms  
**POWER RATING:** 100 watts

**MECHANICAL SPECIFICATIONS:**

**BASE:** ABS, Ultrasonic brass insert  
**TERMINATION:** "N" Connector termination  
**HEIGHT:** 1 1/2" (4cm)  
**DIAMETER:** 4 1/4" (10.7cm)  
**COLOR:** W - White , B - Black

**Vertical Pattern**

