

Technical Specification

B265814

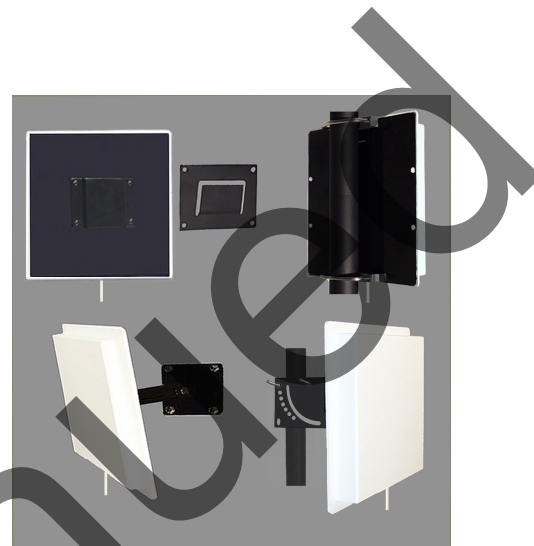
5.725 - 5.925 GHz 14 dBi

5.8 GHz PANEL ANTENNA

Performance: Directional 4 element planar array antenna for the 5.725 thru 5.925MHz band providing 14 dBi gain.

Stylish and Durable: These antennas are manufactured using low loss high deposition printed circuit board material. Heavy plating and total conformal solder mask coating provide exceptional performance at up to 100 watts. A rugged UV inhibited ABS radome with a powder coated aluminum mounting plate provide a robust and stylish package. All 26 Series are supplied with a 12" pigtail.

Mounting: Multiple mounting options are available. These include standard Slip mount, V-Bolt with V-Block, Indoor swivel mount and Heavy duty outdoor universal swivel mount.



ELECTRICAL SPECIFICATIONS:

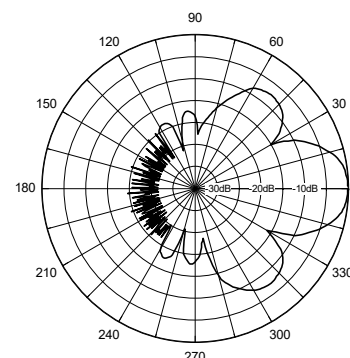
FREQUENCY RANGE:	5725-5925MHz
GAIN:	14 dBi (12 dBd)
FRONT TO BACK:	20dB
VSWR:	1.5:1
VERT BEAM WIDTH:	35°
HORIZ BEAM WIDTH:	35°
POLARIZATION:	Vertical / Horizontal
IMPEDANCE:	50 ohms
POWER RATING:	100 watts

MECHANICAL SPECIFICATIONS:

RADOME:	ABS, UV
COLOR:	Off white
TERMINATION:	12" Pigtail "N" (30cm)
THICKNESS:	3/4" (19cm)
MOUNTING:	Standard Slip Mount
-V	V-Bolt & V-Block
-SM	Indoor swivel mount
-HDSM	Heavy duty Outdoor swivel mount

OVERALL SIZE:	4 1/2" (11.4cm) x 4 1/2" (11.4cm)
FLAT PLATE AREA:	.1406 ft
WIND RATING:	125 MPH (201kph)
WIND LOAD:	9.5 lbs. (4.3kg)

Horizontal Pattern



Vertical Pattern

