



Solving for Complexity in Modern Wireless Systems

Wireless systems are increasingly difficult to deploy. As platforms expand across cellular, WiFi, GNSS, and LMR, the environments they operate in are becoming less forgiving. Faster speeds, harsher exposure, and tighter installation footprints are all compressing the margin for error.

For integrators and operators, the core challenge has shifted. Adding bands and radios is manageable. Doing so without compounding installation complexity, introducing new failure points, or creating long-term maintenance risk is where most deployments feel the pressure. While the antenna is only one part, it is the most critical point at which the pressure is revealed, and performance either meets or fails expectations.

At Mobile Mark, we are dedicated to building antenna solutions that ease the burden of deployment through reliable, adaptable designs that hold up in real operating conditions. Five new product releases take on some of the most common challenges we've seen across fleet, public safety, LMR, and drone detection applications. Also, we are expanding our partnerships and industry memberships to keep us aligned with how these systems are being built and where they're falling short.

From Across the Pond EUROPEAN DIVISION

Our defining Q1 goal at Mobile Mark Europe was to establish deeper connections with core industries in our diverse client portfolio. Through our new partnership with Astute, we expanded into the defence marketplace, highlighted by our presence at Enforce Tac 2026, where we explored sector needs and how our products fit into 360-degree communication solutions. We will apply this knowledge at MSPO, Kielce, Poland, 8-11 September 2026 with Astute.

In the mining industry, our ProAnt engineering team connected with Boliden to better understand daily client challenges and inform the development of our solutions, aligning our antenna portfolio with their needs.

Mobile Mark also joined the 450 Alliance and Critical Communications Sweden, strengthening our role in critical infrastructure. This will be showcased 16-18 June 2026 at the Critical Communications Sweden booth at London Excel during Critical Communications World.

Following Embedded World in Nuremberg, where new connections were formed, Mobile Mark established a distribution partnership with Techship to further leverage IoT, M2M and broadband markets.

Mobile Mark Europe remains committed to delivering antenna solutions that provide prime connectivity, robust communication and complex customisation driven by market needs throughout 2026 and beyond.

Recent Product Releases & Developments

Explore the latest products designed to address signal challenges across mobile, infrastructure, and high-density wireless environments while reducing integration complexity.



LTM2900 Series: Evolving the LTM Platform for Modern Fleet Deployments

The LTM Series has long served as Mobile Mark's flagship antenna platform, widely deployed across fleet, transit, and public safety environments where reliable connectivity is critical. Building on that foundation, the next-generation LTM2900 Series was introduced in Q1 and is now available, delivering a redesigned form factor engineered for the evolving demands of modern mobile deployments.



The LTM2900 Series retains the proven RF performance of the LTM platform while introducing a 15% reduction in size and an aerodynamically optimized radome designed to reduce drag, minimize mechanical stress, and improve long-term durability. It continues to support dual-carrier 5G (2x2 MIMO x2) and single-carrier 4x4 MIMO configurations, with integrated WiFi 6E and GNSS capabilities to support multi-radio configurations.

Enhancements to environmental performance, including improved resistance to water and ice buildup, help maintain consistent signal performance in high-speed and exposed operating conditions. Additional configuration options include high-temperature variants, rail-compliant materials, and custom colors (a first for Mobile Mark). Whether matching vehicle branding, meeting agency requirements, or keeping tactical deployments low visibility, we'll match any color.

[Learn more about the LTM2900 Series and available configurations →](#)



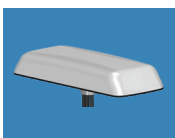
BSLG3-600/7200

Fixed infrastructure deployments require consistent coverage and precise network timing to maintain performance across connected systems. The BSLG3-600/7200 delivers wideband cellular coverage from 617–7200 MHz and now with integrated GNSS for timing and 2x MIMO, all within a rugged fiberglass enclosure designed for long-term outdoor installation.



TMA-WB1 Ground Plane Kit for Drone Detection (Available Mid-Q2)

Wideband monitoring, drone detection, and electronic countermeasure applications rely on consistent coverage across a broad frequency range, regardless of mounting conditions. The TMA-WB1 ground plane kit maintains a stable radiation pattern across 300–7200 MHz, supporting reliable performance in installations with limited or suboptimal mounting conditions.



LLPG1788

Platforms supporting multiple radios leave little room for installation complexity. The LLPG1788 consolidates up to eight 5G cellular elements, up to eight WiFi 6E/7 elements, and GNSS into a single low-profile antenna, reducing cable congestion and simplifying installation across both mobile and fixed deployments.



GMAX900 (Available Q3)

Vehicle deployments often require flexibility across radio systems while maintaining a clean and minimal footprint and quick installations. The GMAX900 integrates cellular, WiFi, and GNSS while supporting the Comtelco LMR line of antennas through a standard NMO interface, allowing system configuration without committing to a fixed antenna setup.



Expanding Engagement Across Critical Communications in Europe

Mobile Mark's presence in Europe continues to expand through closer alignment with customers operating in demanding environments, particularly across defense, mining, and critical infrastructure. Through its partnership with Astute Group, Mobile Mark is expanding engagement with European defense integrators and prime contractors supporting secure and mission-critical communications. At Enforce Tac 2026 in Nuremberg Germany, Mobile Mark and Astute Group met directly with defense and security stakeholders to discuss requirements across surveillance, tactical communications, and secure systems, positioning Mobile Mark's rugged antenna portfolio within real operational use cases.

ProAnt engineering teams are also engaging directly with active customer deployments to better understand performance in the field. A recent on-site evaluation at an underground mining operation provided visibility into wireless systems supporting tunnel-based WiFi, LTE/5G testing, and remotely operated equipment that depends on stable, low-latency connectivity.



Working alongside customers in these conditions keeps development aligned with real challenges, helping us deliver solutions that hold up where performance failures are not an option.

New Key Industry Partnerships

Mobile Mark has joined the 450 MHz Alliance and Critical Communication Sweden (CCS), expanding involvement in organizations shaping how critical communications and infrastructure networks are designed and deployed.

Private LTE networks operating in the 450 MHz spectrum continue to expand across utilities and infrastructure, where maintaining coverage over large, often remote areas is a constant requirement. Participation in the 450 MHz Alliance keeps Mobile Mark closer to how these networks are being built in practice, with antenna performance playing a direct role in signal reach, stability, and overall system reliability in the field.

By joining CCS, we extended our regional alignment, connecting more directly with stakeholders across the Nordic market working in public safety, utilities, and other mission-critical sectors. Ongoing collaboration within that community provides clearer input into how requirements are evolving across active deployments and where systems are under pressure.

We're looking forward to continuing to work alongside these organizations and their members, supporting the development of communication systems that critical operations rely on every day.

Matchup Guides: Simplifying Antenna and Router Selection



If you are working through antenna and router selection, you already know how quickly compatibility questions can slow things down. **Mobile Mark's Matchup Guides** are built to remove that friction, mapping antennas to widely deployed platforms like Cradlepoint, Peplink, Sierra Wireless, and Digi with verified configurations.

Instead of second-guessing combinations or spending time validating setups, quickly identify proven options, streamline planning and avoid unnecessary rework during installation.

[View Our Matchup Guides →](#)

**For More Info, Call Us
or Visit Us Online**



**Critical
Communication
Sweden**

