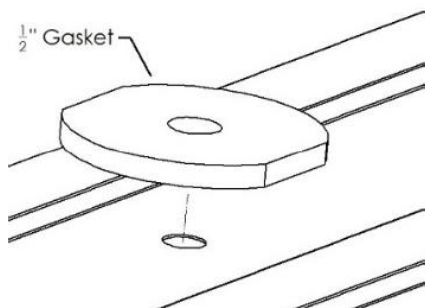


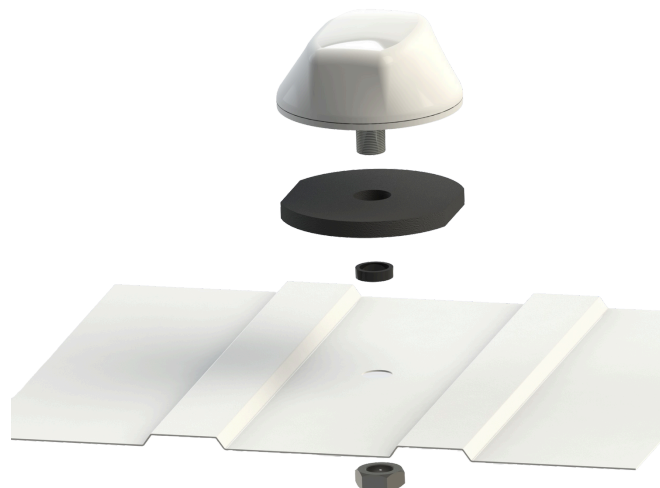
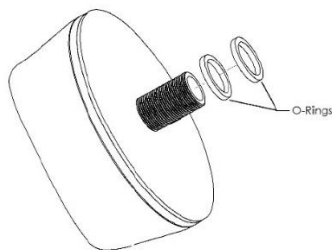
LTM-IMK INSTALLATION INSTRUCTIONS FOR FORD EXPLORER/INTERCEPTER MOUNTING KIT

Installation Steps:

- Drill a 7/8" (22.2mm) hole through the Ford Explorer roof directly in the center of two ribs.
- Peel paper off the 1/2" (12.7mm) gasket to expose the adhesive. Center the gasket on the hole with the adhesive facing down and the flat edges parallel to the ribs.



IMPORTANT: Before installing antenna, place two O-Rings over the LTM stud. The O-Rings will stay in place during installation. Make sure the O-Rings are flat against the gasket and each other.



Exploded view of Mounting Kit

- Remove all the paper from the gaskets.
- OPTIONAL: If additional sealing is required, a bead of silicone can be applied to the top of the 1/2" (12.7mm) gasket as well as around the O-Rings.
- Feed the cables through the 1/2" (12.7mm) gasket and the roof. Attach nut from the inside.
- Tighten nut to 5 lb./ft. (6.8 Nm).
- NOTE: DO NOT overtighten



Terms and Conditions



Toll Free: 1-800-648-2800
Phone: 1-847-671-6690
Fax: 1-847-250-5120
Email: info@mobilemark.com



Phone: +44 1543 459555
Fax: +44 1543 459545
Email: enquiries@mobilemarkeurope.co.uk



Mobilemark.com

950-001-9-002A-0516 SM REV. A