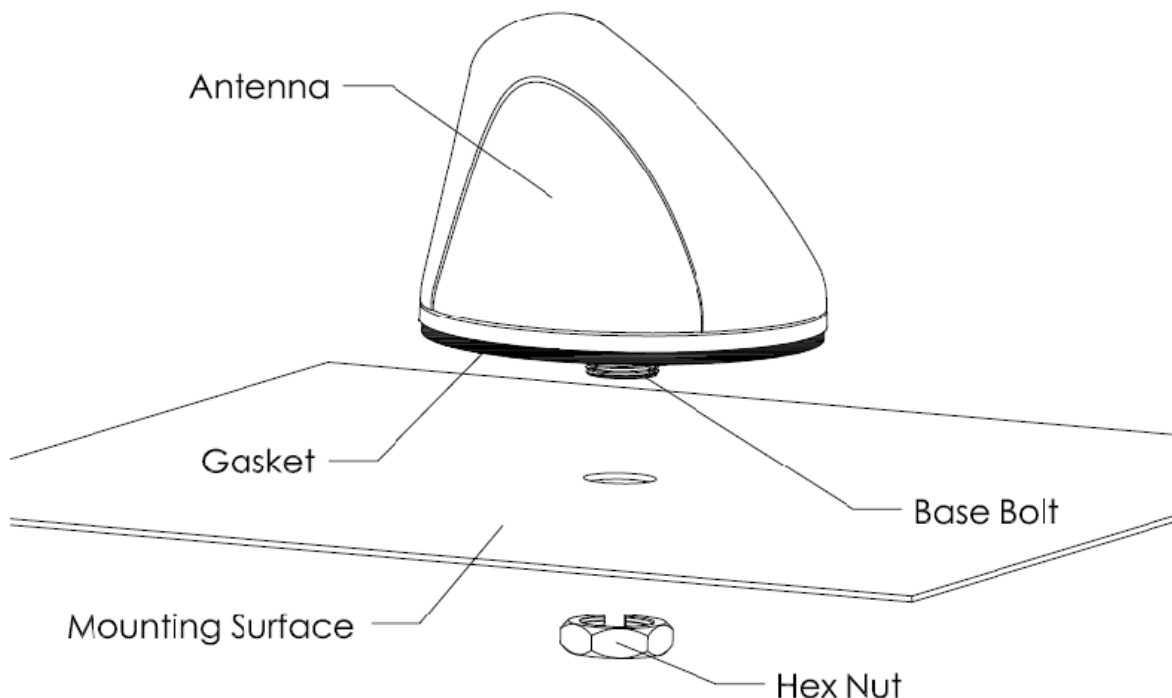


SMW Series Installation Instruction

Installation Steps:

- Drill a 3/4" (19mm) diameter hole through the mounting surface (1 sq-ft ground plane recommended)
- Feed the cable(s) and base bolt through the hole
- OPTIONAL: If additional sealing is required, a bead of silicone can be applied to the gasket
- Attach the Hex Nut
- Tighten nut to 5 lb./ft. (6.8 Nm)
- NOTE: DO NOT overtighten
- NOTE: If the underside of the base bolt is exposed, sealing is required
- ATTENTION: Always wear safety glasses and follow the proper safety practices when installing this antenna



Terms and Conditions



Toll Free: 1-800-648-2800
Phone: 1-847-671-6690
Fax: 1-847-250-5120
Email: info@mobilemark.com



Phone: +44 1543 459555
Fax: +44 1543 459545
Email: enquiries@mobilemarkeurope.co.uk



Mobilemark.com

950-003-9-001-0813/DR: SM/APP: RP/REV. C