

TMA Series Installation Instruction

HIGH PERFORMANCE TACTICAL MESH ANTENNA NON-AMPLIFIED

Products covered:

TMA-14-2VT 1400-1500MHz (2dBi) Linear-Vertical.

TMA-24-2CT 2400-2500MHz (2dBi) Right Hand circular.

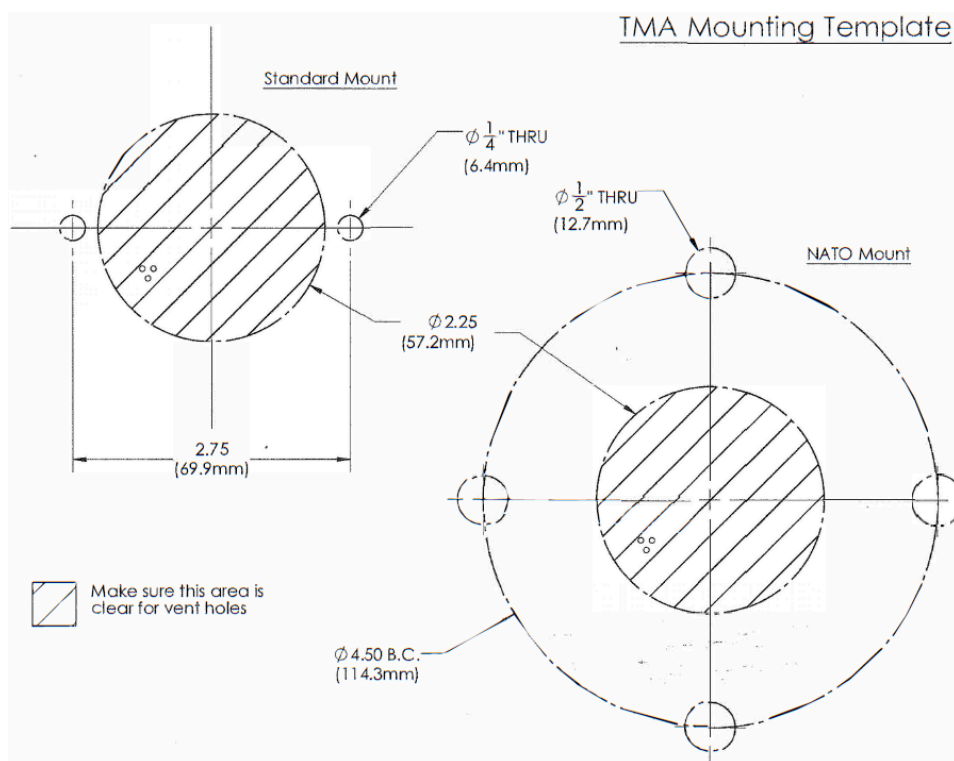
TMA-44-5VT 4400-4800MHz (5dBi) Linear-Vertical.

TMA-49-5VT 4400-5000MHz (5dBi) Linear-Vertical.

TMA-5X-4VT 5400-5850MHz (4dBi) Linear-Vertical.

TMA-5XS-7VT 5400-5850 (7dBi) Linear-Vertical.

TMA-WB1 420-6000MHz Wide Band.



Terms and Conditions



Toll Free: 1-800-648-2800
Phone: 1-847-671-6690
Fax: 1-847-250-5120
Email: info@mobilemark.com



Phone: +44 1543 459555
Fax: +44 1543 459545
Email: enquiries@mobilemarkeurope.co.uk



Mobilemark.com

950-106-9-001-0924/DR: SM/APP: XX/REV. B

DOCUMENT CONVENTIONS



NOTE: Tips, hints, or unique requirements that you should take note of.



CAUTION: Care is required. Disregarding a caution can Result in Data Loss or equipment malfunction.



WARNING: Indicates a condition or procedure that could result in personal injury or equipment damage.

QUICK INSTALLATION GUIDE

Product ships with:

- HP-TMA
- Quick Install Guide

Additional Items required:

- 802.11 A or B/G Radio
- N-Male to Radio Antenna Port, Coax cable (See your radio manufacture's set-up guide for more information on the required connector for your Radio) to connect your radio to the TMA

Mounting the HP-TMA

The HP-TMA does not require a ground plane and can be mounted on any surface. We suggest the following guidelines be followed for installation for maximum performance

1. The HP-TMA must be mounted vertically with the logo facing upward. It should not be mounted inverted or on an angle outdoors.
2. There should be no obstructions on the same horizontal plane as the HP-TMA within a 12" (30.48cm) radius.
3. The HP-TMA should be mounted on a horizontal plane above any large metal objects that could act as obstructions, such as a turret, passenger compartment or door.



Figure 1



NOTE: The HP-TMA cannot be mounted inverted outdoors because the vent on the base may become obstructed. However, you may mount the HP-TMA inverted indoors.



Terms and Conditions



Toll Free: 1-800-648-2800
Phone: 1-847-671-6690
Fax: 1-847-250-5120
Email: info@mobilemark.com



Phone: +44 1543 459555
Fax: +44 1543 459545
Email: enquiries@mobilemarkeurope.co.uk




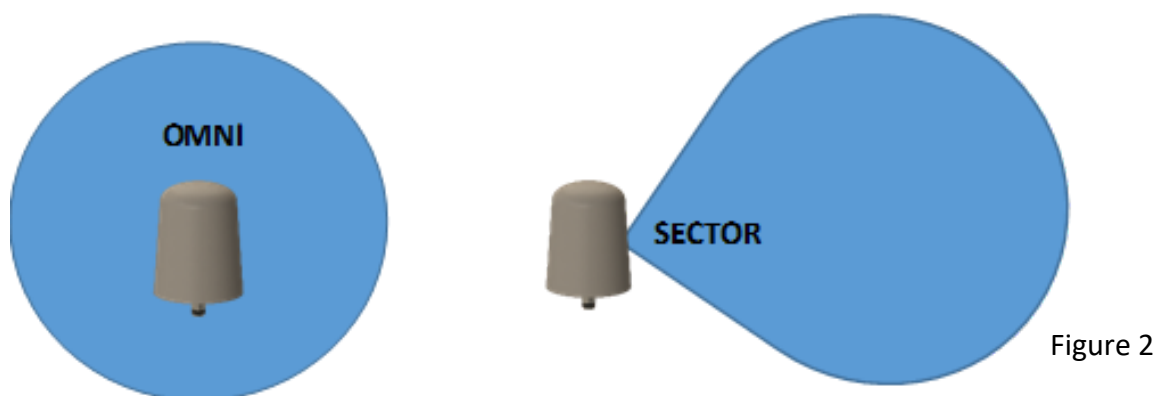
Mobilemark.com

950-106-9-001-0924/DR: SM/APP: XX/REV. B

ANTENNA DEPLOYMENT

The type of radiation pattern produced by the HP-TMA varies for the different models. Figure 2 shows where the HP-TMA should be mounted in the desired coverage patterns.

 **NOTE:** The Antenna Patterns in Figure 2 are not representative of actual shape or scale of the HP-TMA's signal radiation patterns.



Mounting Direction for the HP-TMA Sector Antenna

The HP-TMA Sector, non-amplified, is a directional antenna. You will need to be aware of the direction it is pointing when deployed. The antenna signal radiates from the front of the antenna. The back of the HP-TMA sector is indicated by the word "BACK" near the bottom edge of the antenna, **Figure 3**



Figure 3



[Terms and Conditions](#)



Toll Free: 1-800-648-2800
Phone: 1-847-671-6690
Fax: 1-847-250-5120
Email: info@mobilemark.com



Phone: +44 1543 459555
Fax: +44 1543 459545
Email: enquiries@mobilemarkeurope.co.uk



Mobilemark.com

950-106-9-001-0924/DR: SM/APP: XX/REV. B

MOUNTING THE HP-TMA

Nato Mount (HDW-TMA-45NATO) Figure 4

The Tactical Mesh Antenna (HP-TMA) can be mounted directly to a vehicle using a standard 4.5" (11.43cm) NATO mounted hole pattern.

1. Use the two 1/4-20 by 1/2" (1.27cm) screws to connect the NATO mounting plate to the (HP-TMA).
2. Use the four 3/8-16 by 1" (2.54cm) bolts to connect the NATO Mounting plate to the (HP-TMA)'s intended mounting location or other hardware as required.

Required Tools

- 1/4" Wrench for bolts to connect mount to the HP-TMA.
- 1/4" Wrench for bolts to connect mount to the vehicle.

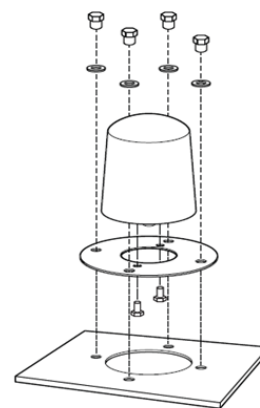


Figure 4

Universal Mounting Bracket (HDW-TMA-UMB) Figure 5

The Tactical Mesh Antenna (HP-TMA) can be mounted to a Pole using the Universal mounting bracket.

1. Use the two 1/4-20 by 1/2" (1.27cm) screws to connect the universal Mounting bracket to the HP-TMA.
2. Use the two 2" (5.08cm) U-Bolts to attach the mounting bracket to pole with a diameter of 1" to 2" (2.54cm to 5.08cm).

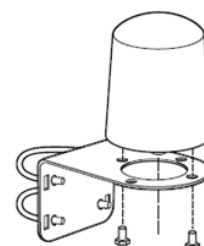


Figure 5



NOTE: For poles larger than 2" (5.08cm) in diameter the bracket has slots for mounting straps.

Required Tools

- 1/4" Wrench for bolts to connect mount to the HP-TMA.
- 1/4" Wrench for bolts to connect mount to the vehicle.



[Terms and Conditions](#)



Toll Free: 1-800-648-2800
Phone: 1-847-671-6690
Fax: 1-847-250-5120
Email: info@mobilemark.com



Phone: +44 1543 459555
Fax: +44 1543 459545
Email: enquiries@mobilemarkeurope.co.uk



Mobilemark.com

950-106-9-001-0924/DR: SM/APP: XX/REV. B

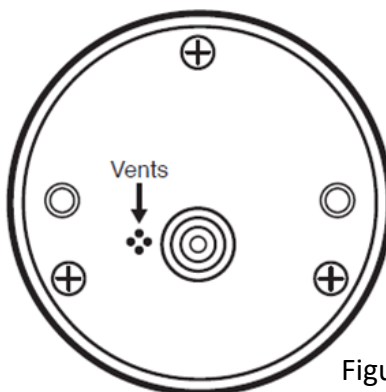


Figure 6

WARNING: The bottom of HP-TMA has three small pressure equalizing vent Holes, Figure 6. These vents must not be obstructed or penetrated

COAX CABLE INFORMATION

Cable Requirements

The TMA requires a Coax cable with an Impedance of 50 Ohm and N-Male Connectors. Check with your radio manufactures's documentation for the coax cable and connector requirements for your radio.

CAUTION: Disconnect all power before connecting or disconnecting any cables, coax or antennas to or from these devices. Failure to do so will void the warranty.



Terms and Conditions



Toll Free: 1-800-648-2800
Phone: 1-847-671-6690
Fax: 1-847-250-5120
Email: info@mobilemark.com



Phone: +44 1543 459555
Fax: +44 1543 459545
Email: enquiries@mobilemarkeurope.co.uk



Mobilemark.com

950-106-9-001-0924/DR: SM/APP: XX/REV. B