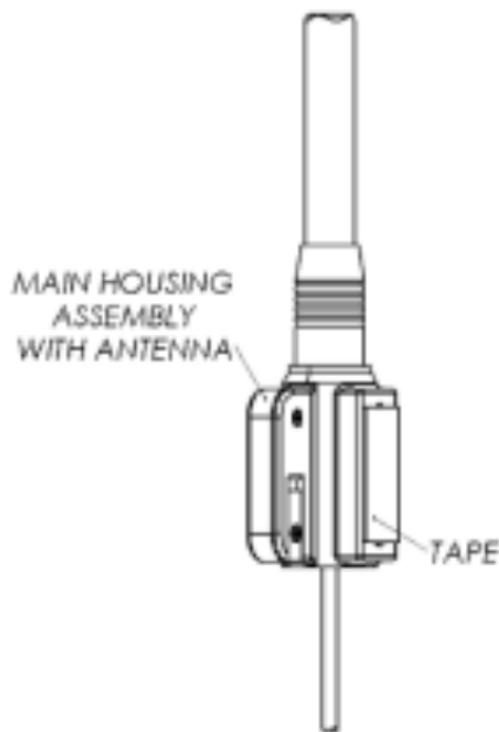
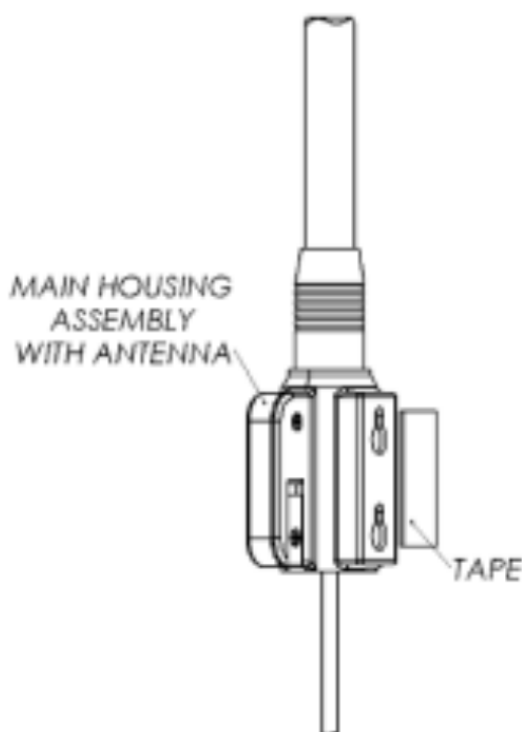


ECO-SERIES - TAPE WALL MOUNT INSTALLATION INSTRUCTIONS

Installation Steps:

- Locate desired mounting location. It must be a smooth flat surface (wall, glass, plastic or metal)
- Peel back one side of the Double Stick Tape, (use included alcohol wipe to clean surfaces) place the Double Stick Tape on the back of the Main Housing Assembly with Antenna covering the keyholes pressing the Double Stick Tape firmly
- Peel back the other side of the Double Stick Tape
- Place in desired location pressing firmly into position
- **ATTENTION:** Always wear safety glasses and follow the proper safety practice when installing this antenna



Terms and Conditions



Toll Free: 1-800-648-2800
Phone: 1-847-671-6690
Fax: 1-847-250-5120
Email: info@mobilemark.com



Phone: +44 1543 459555
Fax: +44 1543 459545
Email: enquiries@mobilemarkeurope.co.uk



Mobilemark.com

950-121-9-001-0325/DR: GK/APP: XX/REV.A