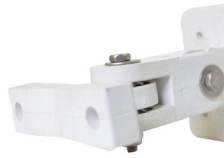




Broadband Panel



Optional Wall Mount Bracket



Adjustable Pole Mount Bracket

Directional Panel Broadband 2.2-3.8 GHz

- Compatible with multiple systems including 2.4 WiFi, WiMAX 2.5 or 3.65 GHz
- Compact and attractive for inbuilding
- High gain performance (10 dBi & 16 dBi)
- Adjustable tilt pole mount, up to 24° downtilt

Mobile Mark's new broadband PN Series sectorized panel antennas use the latest PCB technology for high performance, lower cost and compact size. They are excellent choices for deploying point-to-point network in the 2.2-3.8 GHz band. Both models cover the entire range with a VSWR of 2:1.

These directional antennas are available in two different gains. The PN10-3000 provides 10 dBi gain with a beamwidth of 65° Azimuth and 45° Elevation. The high gain PN16-3000 provides 16 dBi gain with a narrower beamwidth of 30° Azimuth and 30° Elevation..

Multiple antennas can be phased together to provide increased capacity and target a specific coverage area.

Both models feature a front -to-back ratio of better than 25 db. By maintaining this F-to-B ratio along with low side lobe levels, the possibility of off axis interference is greatly reduced.

The antenna is housed in a very attractive grey ASA plastic. Compact in size, 9" H x 9" W (23 cm x 23 cm), this antenna will be unobtrusive in any indoor or outdoor environment.

The antennas can be pole mounted for easy network deployment. An

adjustable tilt pole mounting bracket allows for simple alignment. The antennas can be adjusted up to 24° downtilt.

An optional wall mount adapter is also available, which provides up to 45° adjustment in both the vertical and horizontal planes. The standoff for the wall mount is 1 1/4" (3.2 cm).

The antenna terminates with a 1 foot pigtail of RF-195 cable and an N Jack (Female) connector.

Mobile Mark can provide cable assemblies (jumpers) in a variety of cable types and lengths.

Model #	Gain
PN10-3000-3Y-GRY-12	10 dBi
PN16-3000-3Y-GRY-12	16 dBi
PN-WMK	Optional Wall Mount
Supplied with 1-ft RF-195 pigtail cable Jumper cables are also available, built to order.	

Specifications

Frequency:	2.2-3.8 GHz
Gain:	See model table
VSWR Max:	2:1
Impedance:	50 Ohm nominal
Max Power:	20 watts
Beamwidth:	
PN10-3000	65° Az, 45° El
PN16-3000	30° Az, 30° El
Front to Back Ratio:	25 dB or better
Lightning Protection:	External recommended
Max Wind Velocity:	125+ mph (193 kph)
Operating Temp:	-40° to +85° C
Material:	Grey ASA radome

Dimensions:	9" H x 9" W (23 cm x 23 cm)
Weight:	2.2 lbs (1 kg)
Mounting:	Adjustable pole mount, and Stainless steel U Bolts, fits mast up to 2.5" (6.4 cm) OD
Bracket:	
Pole mount	24° vertical downtilt adjustment 3 7/8" standoff (9.8 cm)
Wall mount (optional)	Up to 45° adjustable range 1 1/4" standoff (3.2 cm)
Cable:	1 ft. RF-195
Connector:	N Jack (Female)