

Whether you have a lot of Data to transmit or just a little, Cellular M2M is moving into 5G frequency bands. We've broadened our frequency ranges to expand your options with Mobile, Fixed Site, and Covert Antennas.

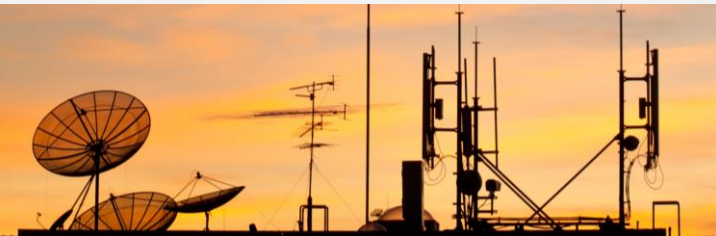
# Cellular M2M

**MobileMark**  
antenna solutions

## Fast Data with 5G & WiFi 6E

Innovative Design & Collaborative Partnerships!

### OPTIMIZE YOUR CELLULAR NETWORKS WITH THESE 5G BROADBAND ANTENNAS



#### INDUSTRIAL M2M INFRASTRUCTURE



**Y42700WB-2X**  
Dual Log Periodic  
2x MIMO 600-6000 MHz  
Mounting Bracket Included



**PND8-3800**  
4x MIMO CBRS C-Band Panel  
3.4 – 4.2 GHz, 8 dBi Gain  
Adjustable Tilt Mount



**BPN942**  
Base Station for Private Networks  
4x 5G Sub-6; 2x WiFi 6E, 1x GPS  
Three Mounting Options



**LTBG308**  
2x 5G/LTE & 1x GNSS  
Mount on Utility or NEMA Box  
Slim Profile

#### COVERT & DEVICE M2M ANTENNAS



**CVL-WB2**  
5G/LTE Single Element  
617 – 7200 MHz, 2 dBi Gain  
Slim Profile



**CVWG-WB2**  
1x 5G/LTE & 1x GNSS  
617 – 7200 MHz, 2.5 dBi Gain  
Ground Plane Independent



**CVWG508**  
2x 5G/LTE, 2x WiFi 6E, & 1x GNSS  
WiFi 6E Up to 7.125 GHz  
Ground Plane Independent



**PSKN5-626**  
5G/LTE Device Antenna  
617 – 7200 MHz, 3 dBi Gain  
Knuckle Swivel Design

#### MOBILE ANTENNAS



**LTMWG946**  
4x 5G/LTE, 6x WiFi 6E, & 1x GNSS  
Can Configure with Fewer WiFi  
Match with Advanced Modems



**LLPG708**  
2x 5G/LTE, 4x WiFi 6E, & 1x GNSS  
5G Sub-6 at 617 – 6000 MHz  
Low Profile Design



**MXFG508**  
2x 5G Sub-6, 1x WiFi 6E, 1x GNSS  
Fits Between Roof Ribs on Ford Explorer  
Sleek Slim Profile



**OD3-600/6000MOD2**  
Heavy-Duty & Impact Resistant  
5G at 617 – 6000 MHz, 2-4 dBi Gain  
Mount on Large Industrial Vehicles