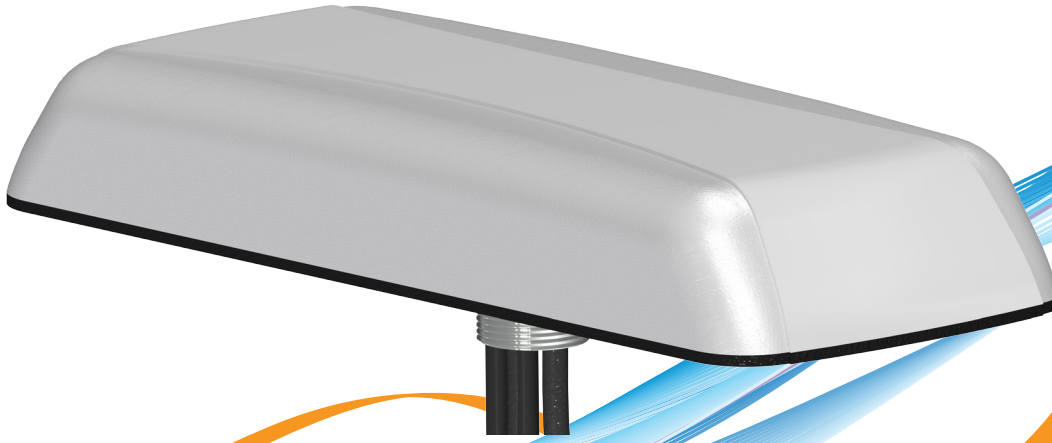


NEW! Low Profile Multiband LTE, WiFi & GPS Antenna Series



LLP Series

7-Cables: 2xLTE, 4xWiFi, and 1xGPS
GPS or combo GPS/Glonass
Compact low profile radome
Broadband Global LTE coverage
Tested to industry & military specs

**Global LTE Frequencies,
Dualband WiFi & GPS**

Specs	LLP SERIES		
# of Cables	Models with 2, 3, 4, 5, 6, or 7 Cables	Impedance	50 Ohm Nominal
Wireless Applications	Public Safety, Fleet Management, or Fixed M2M/IoT	Max Power	10 Watts
Frequencies	LTE/Cellular: 694-960 MHz & 1710-3700 MHz WiFi dual-band: 2.4-2.5 MHz & 4.9-6.0 GHz GPS: 1575 MHz GPS/Glonass: 1575 MHz & 1612 MHz	Case Dimensions	9" x 3.5" x 1.25" (22.8 cm x 8.9 cm x 3.2 cm)
		Radome Material	ASA UV-Stable Plastic
		Mounting	Through-Hole, Groundplane dependent
Gain	694-960 MHz, 0-3 dBi 1710-3700 MHz, 4 dBi 2.4-2.5 & 4.9-6.0 GHz, 4 & 5 dBi GPS, 5 dBi (26dB amplifier)	Operating Temperature	-40° to +80° C
Cables	RG-174 for GPS, Low Loss-195 for remaining cables	Shock & Vibration	IEEE1478, EN61373, MIL-801G, TIA 329.2-C
Connectors	SMA Plugs & RP SMA Plugs; or customize	Water Ingress	IP67
VSWR	2:1 VSWR over range		

Mobile Mark's LLP Series antenna gives you up to SEVEN separate antennas, and all in one compact housing!



The NEW LLP series from Mobile Mark can accommodate up to seven separate antennas, all in one compact, low profile antenna housing: two LTE antennas, four WiFi antennas as well as one GPS antenna (optional combination GPS/Glonass). The LLP702 is ideal for fleet management systems, or high end gateways that combine GPS with Global LTE MIMO, as well as WiFi MIMO.

What makes the LLP stand out from other surface mounted antennas is that it has a significantly reduced profile radome. Even with the reduction in size, the LLP still has full capability for Global LTE on the 694-960 MHz and 1710-3700 MHz bands.

The LLP is available in either white or black, and is made from UV-Stable ASA plastic. It is typically configured with 15 feet of LL-195 cable and SMA or RP SMA connectors. Custom lengths and connector choices are available.

With capability for a full range of MIMO connections, the LLP series has a configuration for a wide variety of wireless applications. Other antennas in the LLP family include the LLP202, LLP302, LLP402, LLP502 and LLP602.

Compatible with today's high end Gateway and Router devices!

Model Series	Global LTE Cable (Low Loss-195)	Global LTE Cable (Low Loss-195)	WiFi Cable (Low Loss-195)	WiFi Cable (Low Loss-195)	WiFi Cable (Low Loss-195)	WiFi Cable (Low Loss-195)	GPS/Glonass Cable (RG-174)
LLP202	694-960 MHz (0-3 dBi) & 1710-3700 MHz (4 dBi)	694-960 MHz (0-3 dBi) & 1710-3700 MHz (4 dBi)					
LLP302	694-960 MHz (0-3 dBi) & 1710-3700 MHz (4 dBi)	694-960 MHz (0-3 dBi) & 1710-3700 MHz (4 dBi)					1575 MHz & 1612 MHz
LLP402	694-960 MHz (0-3 dBi) & 1710-3700 MHz (4 dBi)	694-960 MHz (0-3 dBi) & 1710-3700 MHz (4 dBi)	2.4-2.5 GHz (4 dBi) & 4.9-6.0 GHz (5 dBi)				1575 MHz & 1612 MHz
LLP502	694-960 MHz (0-3 dBi) & 1710-3700 MHz (4 dBi)	694-960 MHz (0-3 dBi) & 1710-3700 MHz (4 dBi)	2.4-2.5 GHz (4 dBi) & 4.9-6.0 GHz (5 dBi)	2.4-2.5 GHz (4 dBi) & 4.9-6.0 GHz (5 dBi)			1575 MHz & 1612 MHz
LLP602	694-960 MHz (0-3 dBi) & 1710-3700 MHz (4 dBi)	694-960 MHz (0-3 dBi) & 1710-3700 MHz (4 dBi)	2.4-2.5 GHz (4 dBi) & 4.9-6.0 GHz (5 dBi)	2.4-2.5 GHz (4 dBi) & 4.9-6.0 GHz (5 dBi)	2.4-2.5 GHz (4 dBi) & 4.9-6.0 GHz (5 dBi)		1575 MHz & 1612 MHz
LLP702	694-960 MHz (0-3 dBi) & 1710-3700 MHz (4 dBi)	694-960 MHz (0-3 dBi) & 1710-3700 MHz (4 dBi)	2.4-2.5 GHz (4 dBi) & 4.9-6.0 GHz (5 dBi)	2.4-2.5 GHz (4 dBi) & 4.9-6.0 GHz (5 dBi)	2.4-2.5 GHz (4 dBi) & 4.9-6.0 GHz (5 dBi)	2.4-2.5 GHz (4 dBi) & 4.9-6.0 GHz (5 dBi)	1575 MHz & 1612 MHz