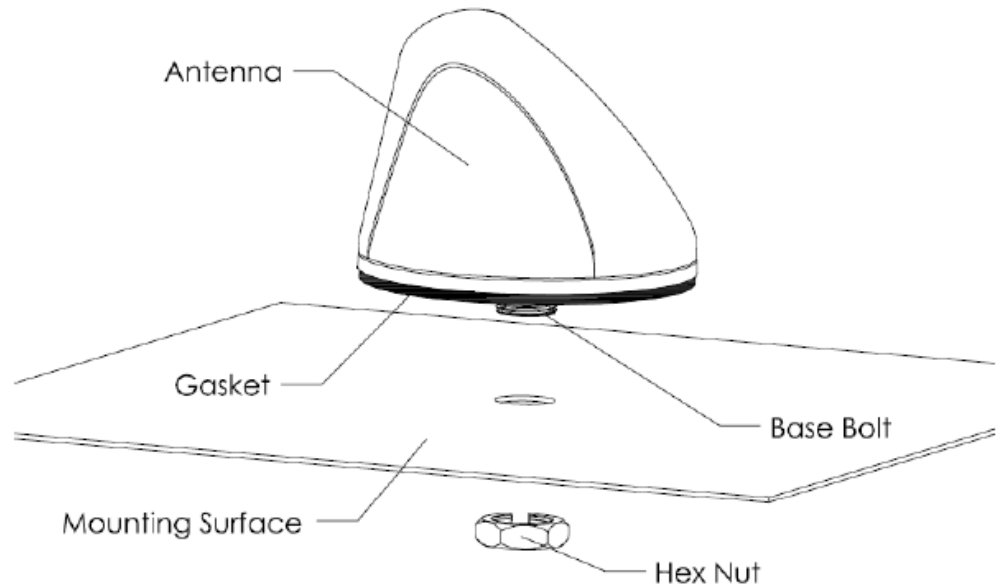


SMW Series Installation Instruction Instructions

INSTALLATION STEPS:

- Drill a 3/4" (19mm) diameter hole in the mounting surface.
(1 sq-ft ground plane recommended)
- Feed the Cable(s) and base through the hole.
- OPTIONAL: If additional sealing is required, a bead of silicone can be applied around the gasket.
- Attach the hex nut.
- Tighten nut to 5lb./ft/ (6.8Nm).
- NOTE: DO NOT overtighten.
- NOTE: If the underside of the base bolt is exposed, sealing is required.
- ATTENTION: Always wear safety glasses and follow the proper safety practices when installing this antenna.



[Terms and Conditions](#)

