

RM-WHF

HEAVY DUTY SURFACE MOUNT ANTENNA

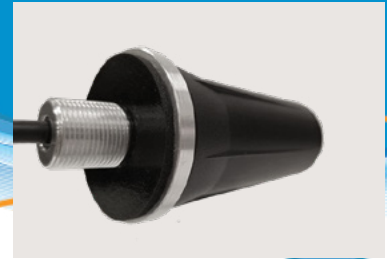
PRODUCT OVERVIEW

The RM-WHF is a rugged surface mount antenna ideal for industrial or other heavy duty applications such as remote monitoring from a fixed locations, or data transfer for Mobile Communications from a moving vehicle.

This antenna is ground-plane independent. It can be mounted on metal, fiberglass, or any plastic surface while still meeting specifications. Applications covered include dual-band WiFi 6E at 2.4 & 5 GHz, CBRS 3.5 GHz, Public Safety 4.9 GHz, and Military 4.4 GHz.

Direct "N" Jack and Mag-Mount versions of this model are available.

Visit our [eStore](#) to purchase an Antenna Online.



HEAVY DUTY SURFACE MOUNT

R M - W H F - 3 C - B L K - 1 2

Cable/Connector
 Color
 Cable Length in inches

Electrical Specifications	
Frequency & Gain	1.7 - 7.2 GHz , 5 dBi Peak
VSWR	2:1 max over range
Max Power Rating	10 Watts
Impedance	50 Ohm Nominal

Mechanical Specifications	
Radome Material/Color	Black ABS Plastic
Cable	LL-195, 1ft (25.4 cm) Can be ordered in Longer Cable Lengths
Radome Dimension	1.69" Dia. x 3.10" Height (4.3 cm x 7.9 cm) 5/8" (1.58 cm) hole required
Weight	6.5 oz (184 g)
Connector	SMA Plug (Male)
Mounting Kit Included	Locknut and Gasket Included. 5/8 Dia. (1.58 cm) Feed Thru, 3/4" (1.9cm) lg thread for up to 1/4" (6.35mm) Thick Metal. 5/8" (1.58cm) hole required
Shock & Vibration	EN 61373, IEEE 1478, MIL-810G TIA-329.2-C
Operating Temperature	-40° to +85° C
Dust & Water Ingress	IP69K (Stud Mount, When Properly Mounted) IP67 (Mag-Mount, When Properly Mounted)
RoHS Compliant	Yes

HIGHLIGHTS:

- Wi-Fi 6E, CBRS
- Ground Plane Independent
- High Performance; High Gain
- Made-in-the-USA & UK

RELATED MODELS:

- RM-WHF-DN (Direct "N" Jack Model)
- MGRM-WHF (Mag Mount Model)
- NT-MK (Universal Wall/Pole Mount Kit)
- RM-WB1 (600 - 6000 MHz, Wider Freq.)

COMMON APPLICATIONS:

- Wi-Fi 6E, CBRS & Private LTE Networks
- Cabinet Mounted
- Shipyards & Railroads
- Universities & Campuses



US Headquarters +1.847.671.6690
 US/CA Toll Free +1.800.648.2800
 European Facility +44.1543.459555

www.MobileMark.com