

BSM3500FS3BKT

PRODUCT OVERVIEW

The BSM3500FS3BKT has Reliable Performance and is Rated at 250 watts, you can expect years of continuous service. This antenna is ideal for CBRS and other Private LTE Applications.

The radome is ultraviolet inhibited and the mounting sleeve is triple plated chrome brass. In addition, it comes with a standard powder coated steel L bracket mount. It is Lightweight weighing less than 2 lbs. but withstands winds of over 125 MPH.

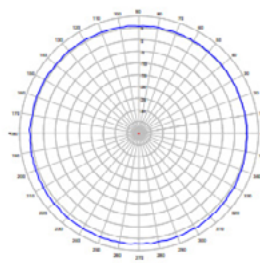
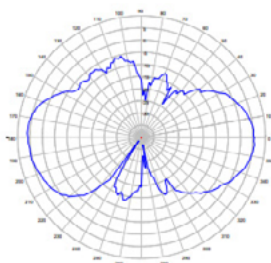
Comtelco is now a Mobile Mark Brand.

Visit our eStore to customize an Antenna Online.

Electrical Specifications	
Frequency & Gain	3550 - 3700 MHz, 5 dBi Peak
VSWR	< 2:1
Power Rating	10 Watts
Impedance	50 Ohm Nominal

Mechanical Specifications	
Radome Material/Color	White UV Inhibited Fiberglass
Azimuth	360°
Vertical Beamwidth	45°
Radome Dimension	8.25" (20.9cm) in Height without Threaded Base & Connector, & 1.38" (3.5cm) in Diameter with Top Cap
Weight	< 2 lbs (907g)
Connector	"N" Jack
Mounting Kit Included	1" -14 Threaded Body & Nut for Supplied 3.5inch (8.89cm) "L" Bracket. Slots to accommodate Optional #36 hose clamps or customer supplied 1/4" (.635cm) Lag Bolts
Lightening Protection	External Recommended
Water Ingress	IPX5
Operating Temperature	-40° to +80° C
Wind Survivability	125 min. MPH (201 kph)

Elevation Plot	Azimuth Plot
----------------	--------------



OMNI-DIRECTIONAL BASE STATION

B S M 3 5 0 0 F S 3 B K T



HIGHLIGHTS:

- Covers CBRS
- Low Profile Omni-Directional
- Bracket Mount Included
- High Performance; High Gain
- Made-in-the-USA & UK

RELATED MODELS:

- DOD7-3500 (2x or 3x MIMO Coverage)
- PS12-3500-60 (Directional Sector, 12 dBi Gain)
- SCR10-3500 (Compact Corner Reflector)

COMMON APPLICATIONS:

- CBRS & Private LTE Networks
- Cellular Bands 3.4 -3.7 GHz
- Infrastructure & Industrial IoT
- Shipyards & Railroads
- Universities & Campuses



US Headquarters +1.847.671.6690
US/CA Toll Free +1.800.648.2800
European Facility +44.1543.459555

www.MobileMark.com