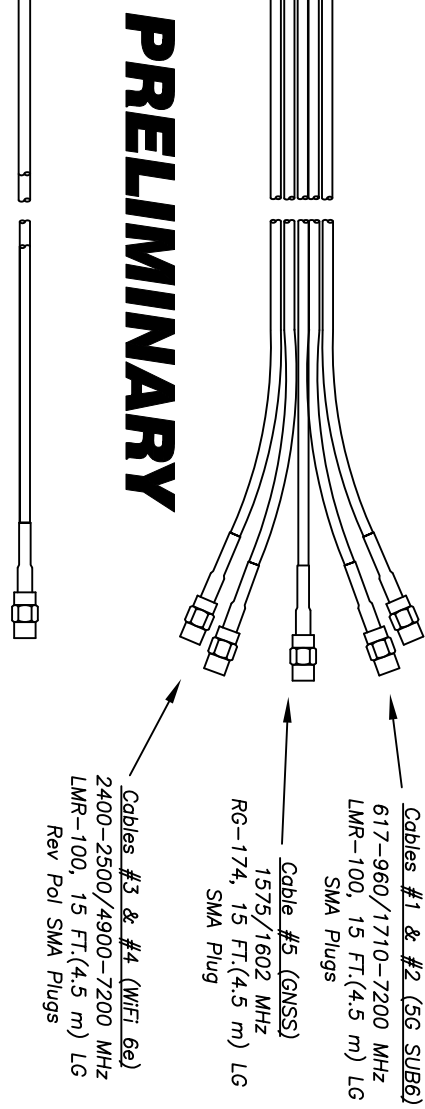
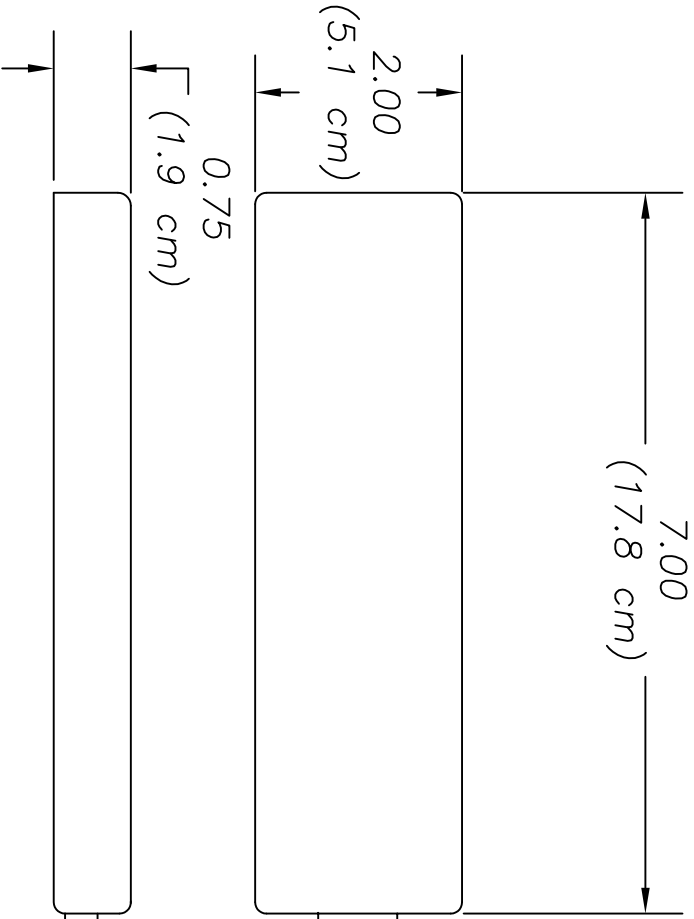


# CW509-7C7C7J7J2C-BLK-180

**Covert Multi-Band MIMO Antenna**  
**2 X 617-960/1710-7200 MHz (5G SUB6)**  
**2 X 2400-2500/4900-7200 MHz (WiFi 6E)**  
**with 1575/1602 MHz (GNSS)**



**PRELIMINARY**



**MobileMark**  
 antenna solutions

US OFFICE & HEADQUARTERS: 1140 W. THORNDALE AVE. ITASCA, IL 60143  
 TEL: (647) 671-6690 • FAX (647) 250-5120  
 UK OFFICE: 8 MIRAS BUS PARK, KEYS PARK ROAD, HEDNESFORD WS12 2FS, UK.  
 UK TEL: (+44) 1543-459555 FAX (+44) 1543-459545  
 VISIT OUR WEBSITE AT WWW.MOBILEMARK.COM

Unit in inches unless specified otherwise

### Antenna Specifications:

Frequency:	617-960 MHz (5G SUB6)
	1700-7200 MHz (5G SUB6)
	2400-2500/4900-7200 MHz (WiFi)
	1575/1602 MHz (GNSS)
Gain:	2 dBi Peak (617-960 MHz)
	4 dBi Peak (1710-7200 MHz)
	4 dBi Peak (2.4-2.5/4.9-7.2 GHz)
GPS Unit Gain	26 dBi, 5 dBi Antenna
Voltage	3.3/5 VDC
Current	10mA (typ.), 20mA (max.)
VSWR:	Typ. 2:1, Max 3:1
Radome Material:	Black ASA Plastic
Nominal Impedance:	50 OHM Nominal
Maximum Power:	10 Watts
Cable:	LMR-100 (5G SUB6 & WiFi)
	RG-174 (GNSS)
Connector*:	SMA Plugs (5G SUB6 & GNSS)
	Rev Pol SMA Plugs (WiFi)
Mounting:	Tape Mounting
Temperature:	-40°C to +80°C
Water Ingress	IP X7
Shock and Vibration	Pending

\* Connectors not shown and may vary per customer request.

