

LTMG944

PRODUCT OVERVIEW

The LTMG944 is a 9-cable antenna with 4x LTE, 4x WiFi6e and 1x GNSS. With 9-elements, the LTMG944 antenna provides a good match for the dual carrier modems that contain two pairs of LTE MIMO elements, one pair for each carrier. These fleet management systems offer Cellular carrier back-up. The 4x WiFi elements provide faster through-put for the advanced WiFi processors.

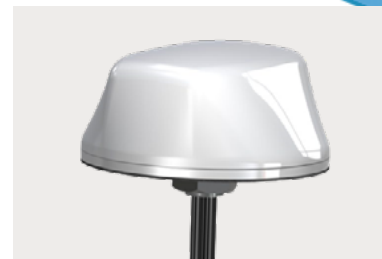
The LTMG944 covers all Global Cellular & LTE frequencies. It also covers CBRS, Private LTE, and 5-G ready. GNSS operates on GPS, Galileo, Glonass, QZSS or Beidou.

Specify LTM944 for a model configured with GPS only.

Visit our eStore to customize an Antenna Online.

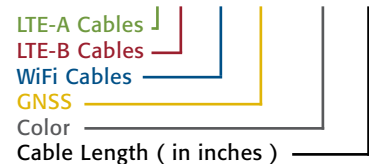
Electrical Specifications		
Frequency & Gain	LTE Cables 1 - 4	694 - 960 MHz, 2 dBi 1710 - 3700 MHz, 5 dBi
	WiFi 6E Cables 5 - 8	2.4 - 2.5 & 4.9 - 7.125 GHz, 5 dBi
VSWR	GNSS Cable 9	1561, 1575, & 1602 MHz, LNA 26 dB, 5 dBi (RHCP)
	LTE	< 2.5:1 VSWR over range (with 12" LMR-100)
	WiFi	< 2:1 VSWR over range (with 12" LMR-100)
Impedance	50 Ohm Nominal	
Power Rating	10 Watts	
GNSS	Amplifier Bias Voltage	2.7 to 5 VDC
	Gain	26 dB +/- 3 dB
	Current	20 mA max, 10 mA typical

Mechanical Specifications		
Radome Material & Color	ASA UV-Inhibitive Plastic, Available in Black or White	
Radome Dimension	5.5" (13.9 cm) in diameter 2.38" (6.0 cm) in height	
1ft Pigtail Cables & Connectors Exiting Antenna	LTE	LMR-100 with SMA Plugs LTE-A (Green) & LTE-B (Red)
	WiFi	LMR-100 with SMA Plugs (Blue)
	GNSS	RG-174 with SMA Plug (Yellow)
Including 14ft Jumper Cables & Connectors	LTE	LL-195 with SMA Jack & SMA Plugs LTE-A (Green) & LTE-B (Red)
	WiFi	LL-195 with SMA Jack & Rev Pol SMA Plugs (Blue)
	GNSS	RG-174 with SMA Jack & SMA Plug (Yellow)
Operating Temperature	-40° to +80° C	
Mounting	7/8" Dia. Feed Through 3/4" Ig. Thread for up to 1/2" Thick Surface	
Shock & Vibration	IEEE1478, EN61373, MIL-810G, TIA 329.2-C	
Water Ingress	IP 67 (When Properly Mounted)	



MULTI-BAND ANTENNA

LTMG944-A3CB3CW3JG2C-WHT-180



HIGHLIGHTS:

- Multiband:
4x LTE, 4x WiFi, 1x GNSS
- WiFi 6E Up to 7.125 GHz
- Dual-Carrier MIMO
- Covers 694 - 3700 MHz
- 1 ft Cable Pigtails Exit Antenna;
14 ft Cable Jumpers Provided
- Color Coded Cable Type for
EASY Match-Up
- Made-in-the-USA & UK

RELATED MODELS:

- LTMWG944
(Wider Freq, Sub-6 & 5G Ready)
- LTMG943 (3x WiFi)
- LTMG942 (2x WiFi)
- LTMG941 (1x WiFi)
- LTMG940 (NO WiFi)
- LTM944 (GPS Model)

COMMON APPLICATIONS:

- Vehicle Fleet Management
- WiFi Data Transfer
- Multiband Modems
- Public Transportation



US Headquarters +1.847.671.6690
US/CA Toll Free +1.800.648.2800
European Facility +44.1543.459555

www.MobileMark.com