



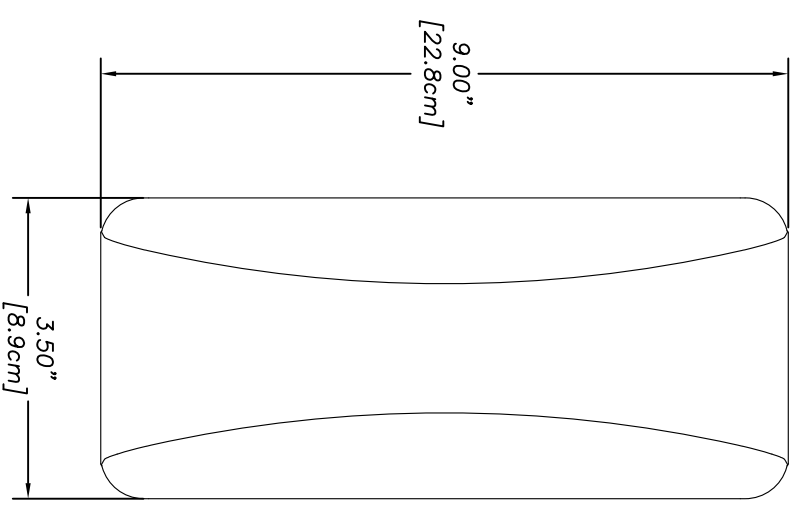
LLPG709-3C3C3C3C3C2C-BLK-180

Multi-band Surface Mount Antenna

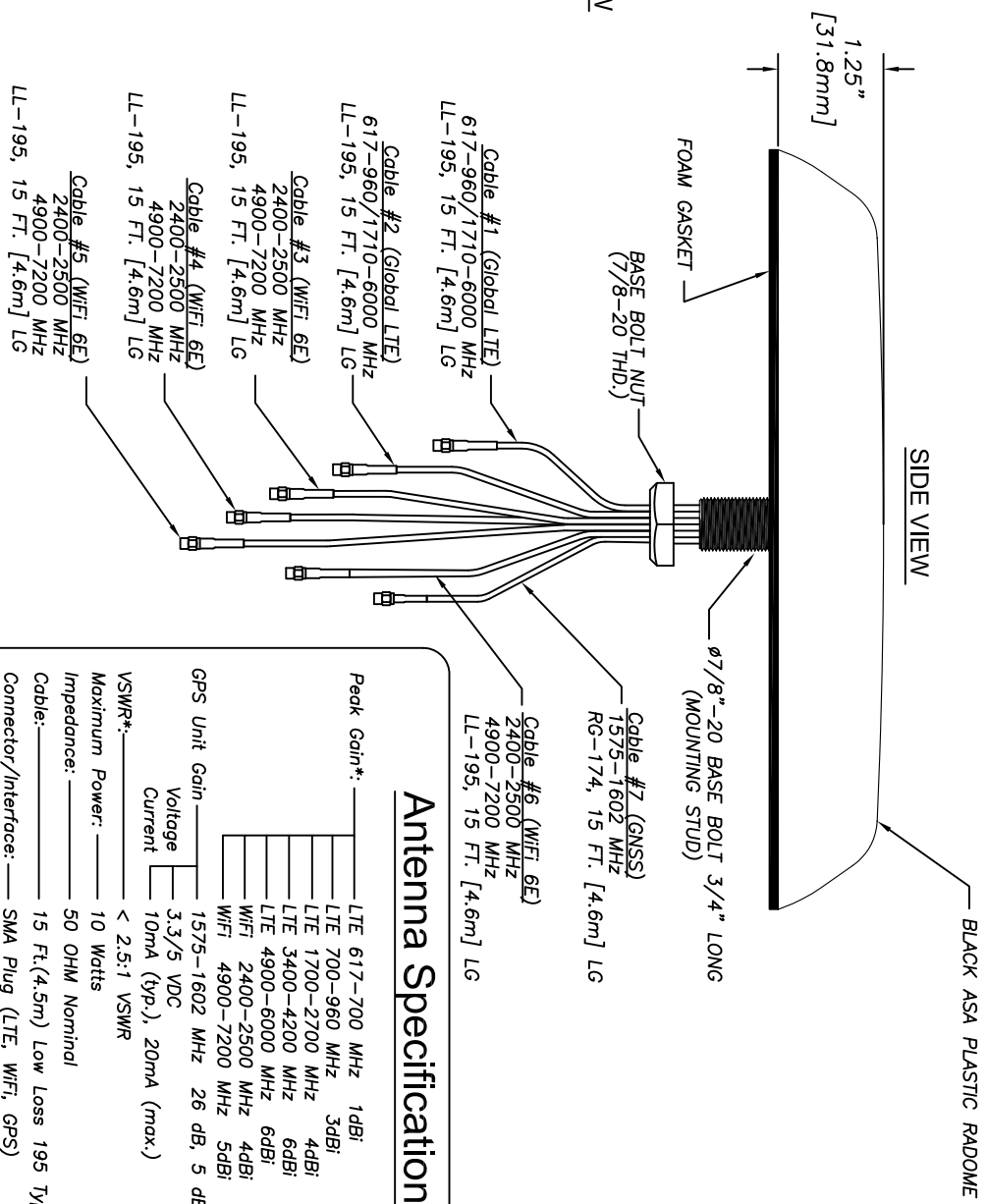
2X Sub6 LTE MIMO 617-6000MHz

4X WiFi 6E 2400-2500/4900-7200MHz

with GNSS



TOP VIEW



SIDE VIEW

Antenna Specifications:

Peak Gain*:	LTE 617-700 MHz	1 dBi
	LTE 700-960 MHz	3 dBi
	LTE 1700-2700 MHz	4 dBi
	LTE 3400-4200 MHz	6 dBi
	LTE 4900-6000 MHz	6 dBi
	WiFi 2400-2500 MHz	4 dBi
	WiFi 4900-7200 MHz	5 dBi
GPS Unit Gain	1575-1602 MHz	26 dB, 5 dBi
Voltage	3.3/5 VDC	
Current	10mA (typ.), 20mA (max.)	
VSWR*	< 2.5:1 VSWR	
Maximum Power:	10 Watts	
Impedance:	50 OHM Nominal	
Cable:	15 Ft.(4.5m) Low Loss 195 Type Cable (LTE)	
Connector/Interface:	SMA Plug (LTE, WiFi, GPS)	
Mounting:	Thru Hole, Ground Plane dependent	
Shock & Vibration:	IEEET478, EN 61373, MIL-810G, TA 329.2-C	
Dust/Water Ingress:	IP67	
Operating Temperature:	-40° to +80° C	

MobileMark
antenna solutions

US OFFICE & HEADQUARTERS: 1140 W. THORNDALE AVE. ITASCA, IL 60143
 TEL: (647) 671-6690 FAX (647) 250-5120
 UK OFFICE: 3 MIRAS BUS PARK, KEYS PARK ROAD, HEDNESFORD WS12 2FS, UK
 UK TEL: (+44) 1543-459555 FAX (+44) 1543-459545
 VISIT OUR WEBSITE AT WWW.MOBILEMARK.COM

