

## XW-24/5XO-FPS-711

Circular Polarized Dual-Band WiFi Antenna

### PRODUCT OVERVIEW

The XW-24/5XO-FPS-711 Flat Panel antenna delivers an ideal solution for a wide range of WiFi applications. The antenna features Circular Polarization for superior performance, and is housed in a sleek, low profile package. It is a highly reliable and cost effective alternative to traditional antenna technologies.

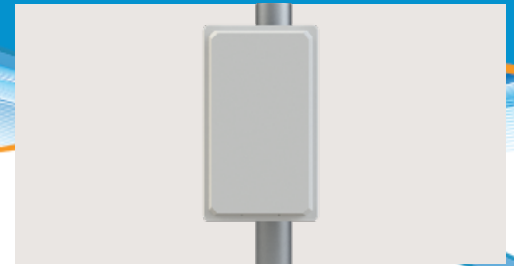
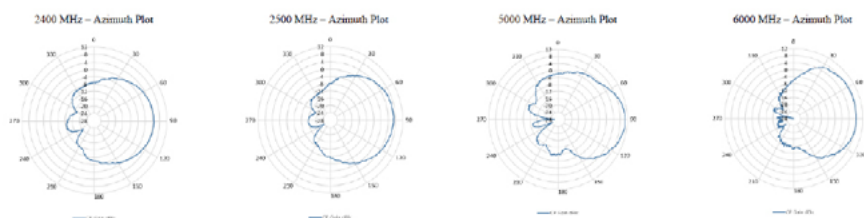
The implementation of Circular Polarization technology allows increased signal penetration through obstacles such as buildings, trees or walls, less interference and extended wireless coverage. Further benefits include less susceptibility to multipath interference or noisy signals and enhanced interoperability with conventional systems. Circular Polarization is commonly implemented in and recommended for use in mobile and Non-Line-of-Site (NLOS) applications, in addition to general WiFi networks, Infrastructure, Point to Point, and Point to Multi-point applications.

Visit our [eStore](#) to customize an Antenna online.

Electrical Specifications	
Frequency & Gain	2.4-2.5 GHz, 7 dBic peak 5.0-6.0 GHz, 11 dBic peak
Beamwidth	70° Azimuth x 40° Elevation at 2.4-2.5 GHz 70° Azimuth x 20° Elevation at 5.0-6.0 GHz
Polarization	RHCP, Axial Ratio < 3dB
VSWR	2:1 Max Over Range
Impedance	50 Ohm Nominal
Power Rating	20 Watts

Mechanical Specifications	
Radome Material & Color	White "ASA" Plastic
Radome Dimension	7.33" (109 mm) Length x 4.30" (19 mm) Width x 0.74" (186 mm) Height
Weight	6.5 oz (184.3 g)
Standard Connector	1x "N" Jack (Female)
Operating Temperature	-40° to +85° C
Antenna Max Area	0.22 SQFT
Mounting Included	Standard Swivel Tilt Mounting
RoHS Compliant	Yes

### Radiation Pattern



X W - 2 4 / 5 X O - F P S - 7 1 1

Approx. Freq.

Outside Mounting

Flat Panel Sector

Gain Reference

### HIGHLIGHTS:

- Dual Band WiFi Coverage on 2.4 and 5 GHz
- Compatible for 802.11a/b/g/n/ac
- Circular Polarization
- Directional Antenna
- Made-in-the-USA & UK

### RELATED MODELS:

- XW-5XO-XP7 (WiFi on 5 GHz)
- PND8-2400/5500 (2.4 & 5 GHz Panel)
- PND10-2400/5500 (2.4 & 5 GHz Panel)
- SCR-2400/5500 (2.4 & 5 GHz Corner Reflector)

### COMMON APPLICATIONS:

- WiFi Networks
- Infrastructure
- Smart Cities
- Point to Point Applications
- Point to Multi-Point Applications



US Headquarters +1.847.671.6690 • US/CA Toll Free +1.800.648.2800  
European Facility +44.1543.459555 • [www.MobileMark.com](http://www.MobileMark.com)

Moving Wireless Forward®