

Technical Specification

210-225MHz 9dBd Gain

Y3325

5 ELEMENT YAGI ANTENNA

High Performance: These 5 element yagi antennas provide 9dBd gain.

Rugged and weatherproof: The construction of these heavy duty yagis feature a 1" aluminum U channel boom and 3/8" solid elements fully welded and polyester powder coated.

Functional & Durable: These yagi antennas are easily installed by one person. They can be field tuned for lowest VSWR without cutting any elements. They are designed to withstand 125 MPH winds.

Mounting: These antennas are supplied with the YDM2 double V-bolt mounting kit.

Termination Options:

Type A: N connector

Type C: SO239 (standard)

UPS Shippable: These antennas are shipped assembled and may incur UPS premium charge.

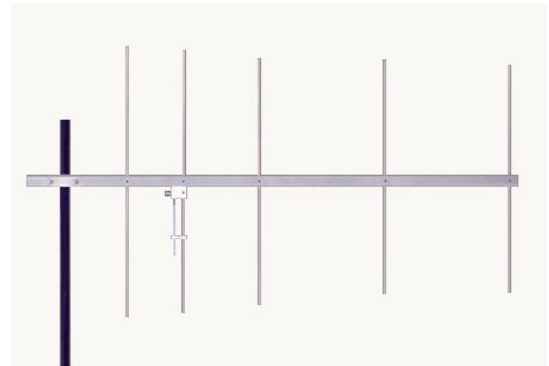
ELECTRICAL SPECIFICATIONS:

FREQUENCY: A 200-215MHz
B 210-225MHz
C 220-250MHz

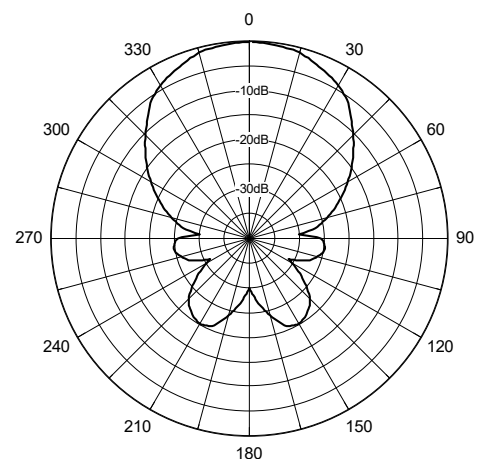
VSWR: <2:1
GAIN: 9dBd
RATING: 300 watts
BANDWIDTH: 8MHz
F to B 18dB
IMPEDANCE: 50 ohms

MECHANICAL SPECIFICATIONS:

MATERIAL: 1" (2.54cm) aluminum U channel boom
3/8" 9.5mm) solid elements
FINISH: Polyester coat
MOUNTING: 2 3/8" (6cm) mast max.
HARDWARE: Stainless steel
LENGTH: 55" (1.39m)
WIDTH: 27" (69cm)
WEIGHT: 6 lbs. (2.9kg)
FLAT PLATE AREA: .61 ft²
WIND RATING: 125 MPH (201kph)
WIND LOAD: 36.8 lbs. (16.69kg)
SHIPPING: UPS



Vertical Pattern



Horizontal Pattern

