

## Technical Specification

### 806-960 MHz 6dB Gain

**Y3383**

## HEAVY DUTY YAGI ANTENNA

**High Performance:** These antennas provide 6dBd, wide band performance.

**Rugged and weatherproof:** The construction of our heavy duty yagis feature 1"aluminum U channel with 3/8" solid elements. All exposed areas are coated with UV polyester. The balun assembly is filled and sealed with elastomeric thermoplastic.

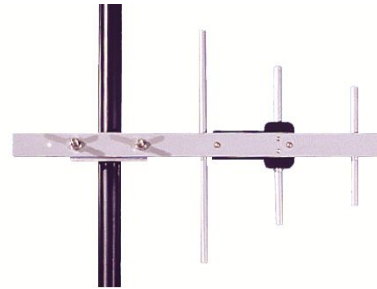
**Lightweight and Durable:** These antennas are easily installed by one person.

#### Termination Options:

**Type A:** 12" Teflon pigtail with N connector.

**Type B:** Direct TNC connection to the balun.

**Type D:** Direct N connection to the balun.



#### ELECTRICAL SPECIFICATIONS:

**GAIN:** 6.0dBd F/B 15dB

**FREQUENCY:**  
 -06 806-896MHz <2:1 VSWR  
 -66 866-960MHz <2:1 VSWR  
 -915 900-930MHz <2:1 VSWR

**VERT BEAMWIDTH:** 70°

**HORIZ BEAM WIDTH:** 90°

**RATING :** 300 watts, 50 ohms impedance

#### MECHANICAL SPECIFICATIONS:

**MATERIAL:** 1" (2.54cm) aluminum U channel boom  
 3/8" (9.5mm) solid elements

**FINISH:** UV inhibited polyester coat

**LENGTH:** 18" (46cm)

**WEIGHT:** <4 lbs. (1.8kg)

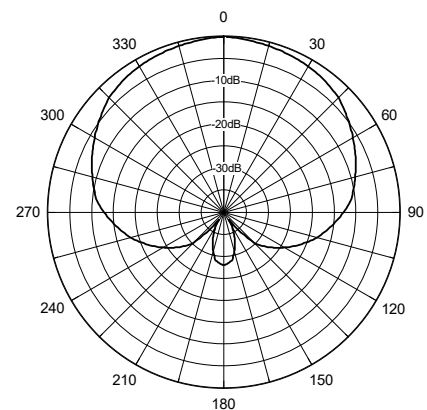
**MOUNT:** 2 3/8" (6cm) mast, stainless hardware

**FLAT PLATE AREA:** .147 ft<sup>2</sup>

**WIND RATING:** 125 MPH (201kph)

**WIND LOAD:** 8.8 lbs.(3.9kg)

**Horizontal Pattern**



**Verical Pattern**

