

Technical Specification

B2697

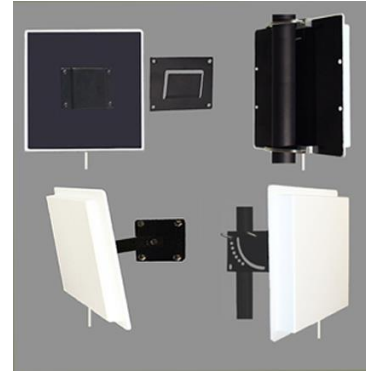
900-930 MHz 7.5 dBi

PANEL ANTENNA

Performance: Directional planar array panel antenna for the 900 thru 930MHz band providing 7.5 dBi gain.

Stylish and Durable: These antennas are manufactured using the finest materials available. They provide great performance in a stylish package. All the plastic parts are molded using UV inhibited ABS material that will give years of service when used inside or outside.

Mounting: Multiple mounting options are available. These include standard slip mount, V-Bolt with V-Block, Indoor swivel mount and Heavy duty outdoor universal swivel mount.



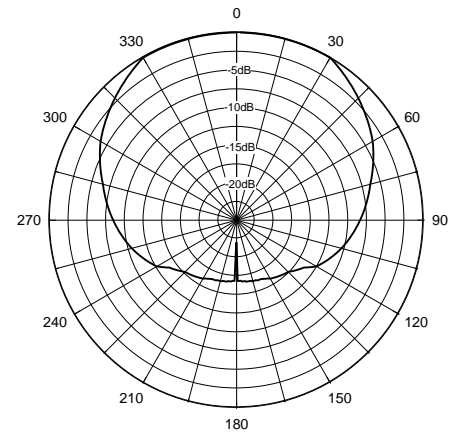
ELECTRICAL SPECIFICATIONS:

FREQUENCY RANGE: 900-930MHz
GAIN: 7.5 dBi (5.5 dBd)
FRONT TO BACK: 20dB
VSWR: 1.5:1
VERT BEAM WIDTH: 65°
HORIZ BEAM WIDTH: 65°
POLARIZATION: Vertical
IMPEDANCE: 50 ohms
POWER RATING: 100 watts

MECHANICAL SPECIFICATIONS:

RADOME: ABS, UV
COLOR: Off white
TERMINATION: 12" (30cm) Teflon Pigtail "N"
THICKNESS: 3/4" (1.9cm)
MOUNTING: Standard Slip Mount
 -V V-Bolt & V-Block
 -SM Indoor Swivel Mount
 -HDSM Heavy duty swivel mount
OVERALL SIZE: 8½" (21.5cm) x 8 ½" (21.5cm)
FLAT PLATE AREA: .5017 ft²
WIND RATING: 125 MPH 201kph
WIND LOAD: 33.8 lbs. (15.3kg)

Horizontal Pattern



Vertical Pattern

