

## Technical Specification

### 2400-2500 MHz 14 dBi

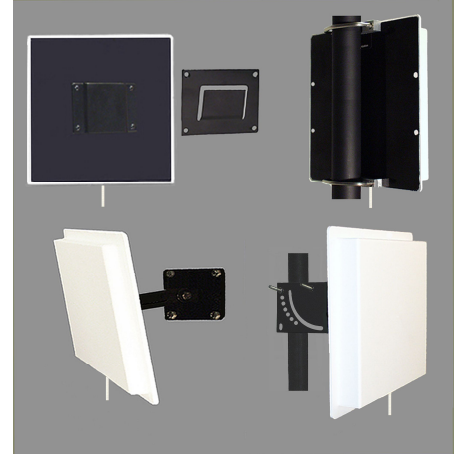
## B262414

### 2.4 GHz PANEL ANTENNA

**Performance:** Directional planar array panel antenna for the 2400 thru 2500MHz band providing 14 dBi gain.

**Stylish and Durable:** These antennas are manufactured using the finest materials available. They provide great performance in a stylish package. All the plastic parts are molded using UV inhibited ABS material that will give years of service when used inside or outside. All 26 Series panels are supplied with a pigtail.

**Mounting:** Multiple mounting options are available. These include standard Slip mount, V-Bolt with V-Block, Indoor swivel mount and Heavy duty outdoor universal swivel mount.



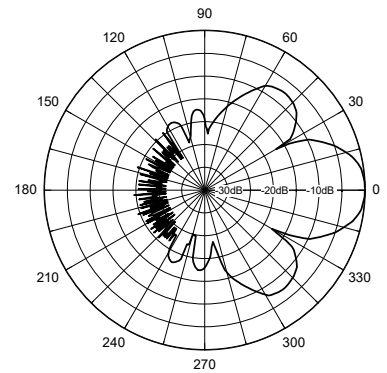
#### ELECTRICAL SPECIFICATIONS:

<b>FREQUENCY RANGE:</b>	2400-2500MHz
<b>GAIN:</b>	14 dBi (12 dBd)
<b>FRONT TO BACK:</b>	20dB
<b>VSWR:</b>	1.5:1
<b>VERT BEAM WIDTH:</b>	35°
<b>HORIZ BEAM WIDTH:</b>	35°
<b>POLARIZATION:</b>	Vertical
<b>IMPEDANCE:</b>	50 ohms
<b>POWER RATING:</b>	100 watts

#### MECHANICAL SPECIFICATIONS:

<b>RADOME:</b>	ABS, UV
<b>COLOR:</b>	Off white
<b>TERMINATION:</b>	12" Pigtail "N"
<b>THICKNESS:</b>	3/4" (1.9cm)
<b>MOUNTING:</b>	Standard Slip Mount
-V	V-Bolt & V-Block
-SM	Indoor swivel mount
-HDSM	Heavy duty Outdoor swivel mount
<b>OVERALL SIZE:</b>	8 1/2" (21.5cm)x 8 1/2" (21.5cm)
<b>FLAT PLATE AREA:</b>	.50 ft <sup>2</sup>
<b>WIND RATING:</b>	125 MPH (201kph)
<b>WIND LOAD:</b>	33.8 lbs (15.8kg)

**Horizontal Pattern**



**Vertical Pattern**

