

Technical Specification

1710-1990 MHz 14 dBi

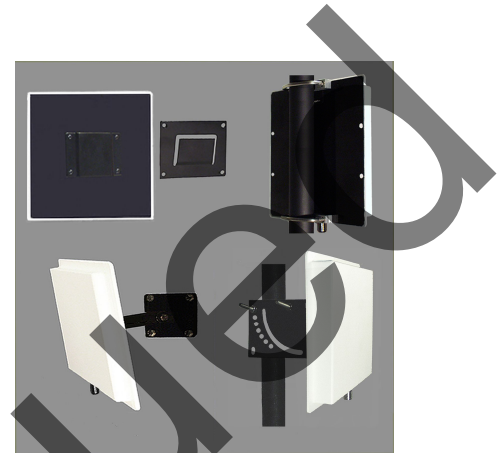
B361714

PANEL ANTENNA

Performance: Directional panel antenna for the 1710 thru 1990MHz band providing 14 dBi gain.

Stylish and Durable: These antennas are manufactured using the finest materials available. They provide great performance in a stylish package. All the plastic parts are molded using UV inhibited ABS material that will give years of service when used inside or outside. The back plate is black powder coated aluminum for excellent durability and mounting stability.

Mounting: Multiple mounting options are available. These include standard Slip mount, V-Bolt with V-Block, Indoor swivel mount and Heavy duty outdoor universal swivel mount.



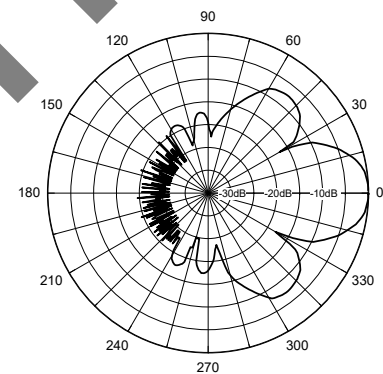
ELECTRICAL SPECIFICATIONS:

FREQUENCY RANGE:	1710-1990MHz
GAIN:	14 dBi (12 dBd)
FRONT TO BACK:	20dB
VSWR:	2.0:1
VERT BEAM WIDTH:	35°
HORIZ BEAM WIDTH:	35°
POLARIZATION:	Vertical
IMPEDANCE:	50 ohms
POWER RATING:	100 watts

MECHANICAL SPECIFICATIONS:

RADOME:	ABS, UV
COLOR:	Off white
TERMINATION:	Direct "N"
THICKNESS:	1 1/2" (4cm)
MOUNTING:	Standard Slip Mount
-V	V-Bolt & V-Block
-SM	Indoor swivel mount
-HDSM	Heavy duty Outdoor swivel mount
OVERALL SIZE:	8 1/2" (21.5cm) x 8 1/2" (21.5cm)
FLAT PLATE AREA:	.50 ft ²
WIND RATING:	125 MPH (201 kph)
WIND LOAD:	33.8 lbs (15.8kg)

Horizontal Pattern



Vertical Pattern

