

Technical Specification

B365814

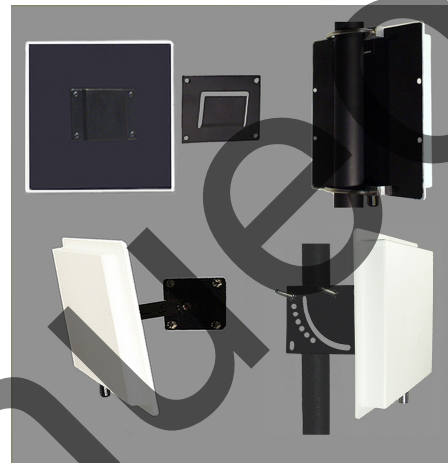
5700-5900 MHz 14 dBi

5.8 GHz PANEL ANTENNA

Performance: Directional panel antenna for the 5.7GHz thru 5.9GHz band providing 14 dBi gain.

Stylish and Durable: These antennas are manufactured using the finest materials available. They provide great performance in a stylish package. All the plastic parts are molded using UV inhibited ABS material that will give years of service when used inside or outside. The back plate is black powder coated aluminum for excellent durability and mounting stability.

Mounting: Multiple mounting options are available. These include standard Slip mount, V-Bolt with V-Block, Indoor swivel mount and Heavy duty outdoor universal swivel mount.



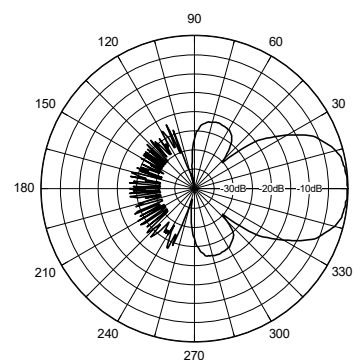
ELECTRICAL SPECIFICATIONS:

FREQUENCY RANGE:	5700-5900MHz
GAIN:	14 dBi (12 dBd)
FRONT TO BACK:	20dB
VSWR:	2.0:1
VERT BEAM WIDTH:	35°
HORIZ BEAM WIDTH:	35°
POLARIZATION:	Vertical
IMPEDANCE:	50 ohms
POWER RATING:	100 watts

MECHANICAL SPECIFICATIONS:

RADOME:	ABS, UV
COLOR:	Off white
TERMINATION:	Direct "N"
THICKNESS:	1 1/2" (4cm)
MOUNTING:	Standard Slip Mount
	-V V-Bolt & V-Block
	-SM Indoor swivel mount
	-HDSM Heavy duty Outdoor swivel mount
OVERALL SIZE:	4 1/2" (11.4cm)x 4 1/2" (11.4cm)
FLAT PLATE AREA:	.1406 ft ²
WIND RATING:	125 MPH (201kph)
WIND LOAD:	9.5 lbs (4.3kg)

Vertical Pattern



Horizontal Pattern

