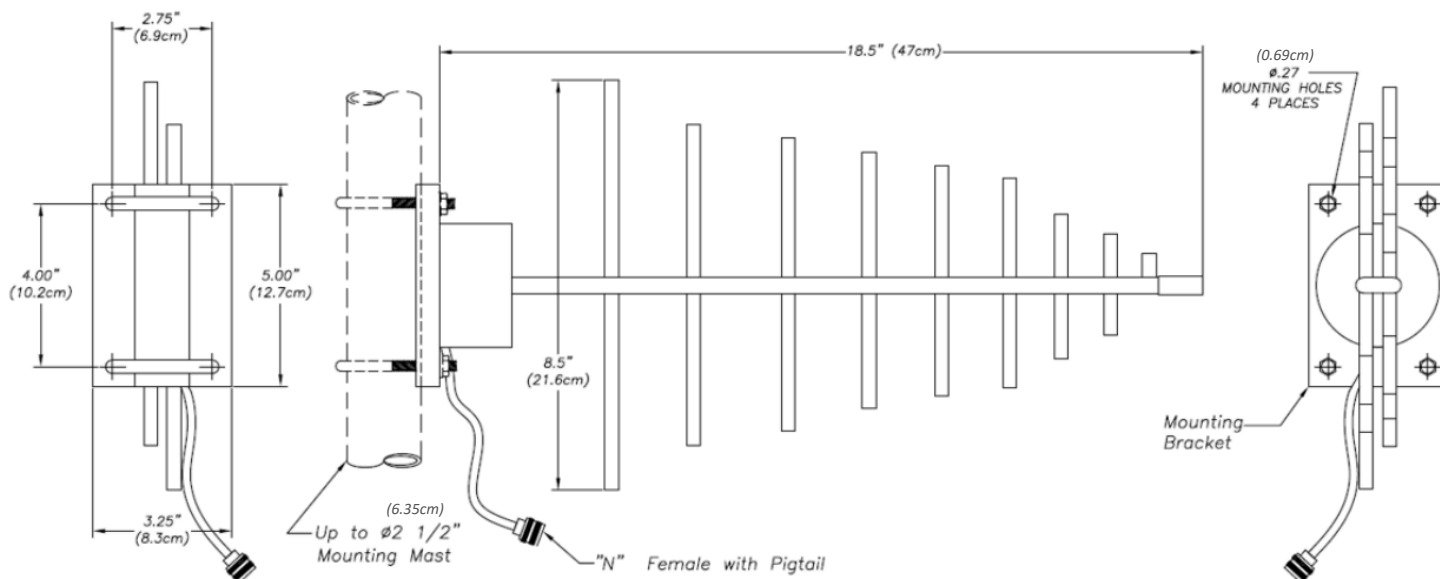


## Y42700WB Installation Instruction

### Installation Steps:

- Install closed end of both "V" bolt assemblies on mast or tower leg
- Tighten the antenna with ¼"-20 nuts & lock washers
- **NOTE:** Maximum diameter for support pipe is 2.25" (5.7cm)
- **ATTENTION:** Always wear safety glasses and follow the proper safety practice when installing this antenna.



[Terms and Conditions](#)



Toll Free: 1-800-648-2800  
Phone: 1-847-671-6690  
Fax: 1-847-250-5120  
Email: [info@mobilemark.com](mailto:info@mobilemark.com)



Phone: +44 1543 459555  
Fax: +44 1543 459545  
Email: [enquiries@mobilemarkeurope.co.uk](mailto:enquiries@mobilemarkeurope.co.uk)



[Mobilemark.com](http://Mobilemark.com)

950-120-9-001-0325/DR: GK/APP: XX/REV.A