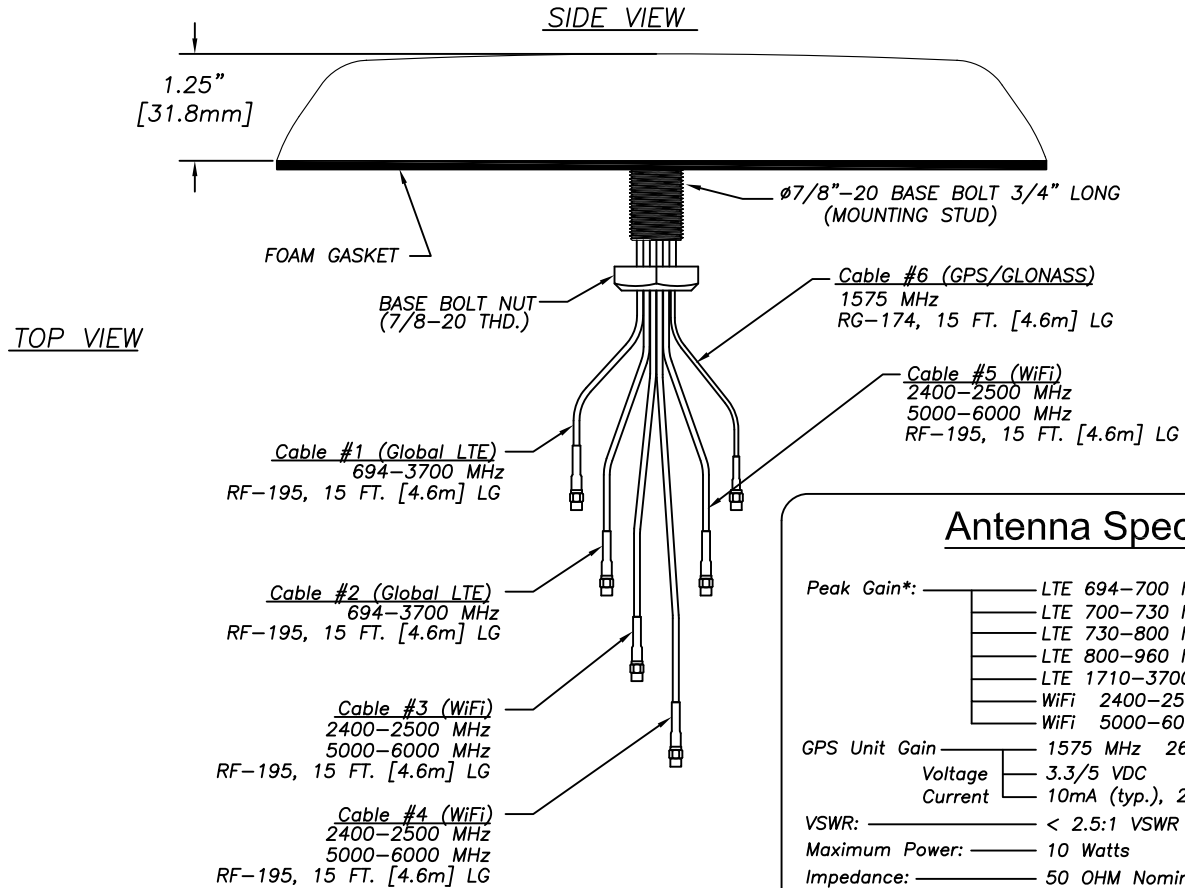
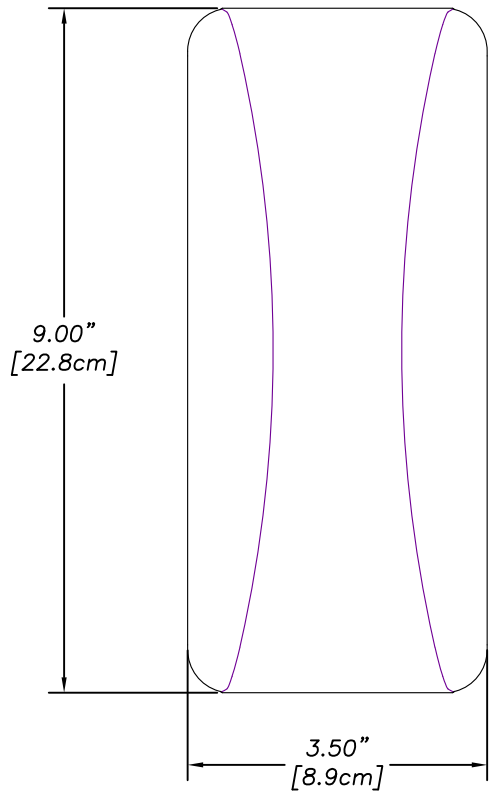


# LLP602-3C3C3C3C3C2C-BLK-180

**Multi-band Surface Mount Antenna**  
**2X Global LTE MiMo 694-3700MHz**  
**3X WiFi 2400-2500/5000-6000MHz**  
**with GPS**



## Antenna Specifications:

Peak Gain*:	LTE 694-700 MHz	-1dBi
	LTE 700-730 MHz	1dBi
	LTE 730-800 MHz	2dBi
	LTE 800-960 MHz	3dBi
	LTE 1710-3700 MHz	4dBi
	WiFi 2400-2500 MHz	4dBi
	WiFi 5000-6000 MHz	5dBi
GPS Unit Gain	1575 MHz	26 dB, 5 dBi
Voltage	3.3/5 VDC	
Current	10mA (typ.), 20mA (max.)	
VSWR:	< 2.5:1 VSWR over range	
Maximum Power:	10 Watts	
Impedance:	50 OHM Nominal	
Cable:	15 Ft. Low Loss 195 Type Cable (LTE)	
Connector/Interface:	SMA Plugs (LTE, WiFi, GPS)	
Mounting:	Thru Hole, Ground Plane dependent	
Shock & Vibration:	(Pending) IEEE147B, EN 61373, MIL-810G, TIA 329.2-C	
Dust/Water Ingress:	(Pending) IP67	
Operating Temperature:	-40° to +80° C	

\*1m ground plane

**MobileMark**  
 antenna solutions

US OFFICE & HEADQUARTERS: 1140 W. THORNDALE AVE. ITASCA, IL 60143  
 TEL: (847) 671-6690 \* FAX (847) 250-5120

UK OFFICE: 8 MIRAS BUS PARK, KEYS PARK ROAD. HEDNESFORD WS12 2FS, UK.  
 UK TEL: (+44) 1543-459555 FAX (+44) 1543-459545

VISIT OUR WEBSITE AT WWW.MOBILEMARK.COM

