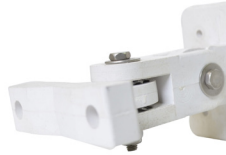
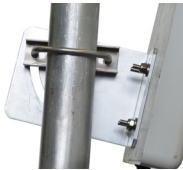




PN17-2400



Optional Wall Mount Bracket



Adjustable Pole Mount Bracket

## WiFi Panel Antenna 2.4-2.5 GHz

- Compatible with WiFi systems using 2.4-2.5 GHz WiFi
- High gain performance (17 dBi)
- Adjustable tilt pole mount, up to 24° downtilt

Mobile Mark's new broadband PN Series sectorized panel antennas use the latest PCB technology for high performance, lower cost and compact size. They are excellent choices for deploying point-to-point networks in the 2.4-2.5 GHz band. This model covers the entire range with a VSWR of 2:1.

Multiple antennas can be phased together to provide increased capacity and target a specific coverage area.

This model features a front-to-back ratio of better than 25 db. By maintaining this F-to-B ratio along with low side lobe levels, the possibility of off axis interference is greatly reduced.

The antenna is housed in a very attractive white ASA plastic radome. Compact in size, 9" H x 9" W (23 cm x 23 cm), this antenna will be unobtrusive in any indoor or outdoor environment.

The antennas can be pole mounted for easy network deployment. An adjustable tilt pole mounting bracket allows for simple alignment. The antennas can be adjusted up to 24° downtilt.

An optional wall mount adapter is also available, which provides up to 45° adjustment in both the vertical and horizontal planes. The standoff for the wall mount is 1 1/4" (3.2 cm).

The antenna terminates with a 1 foot pigtail of RF-195 cable and an N Jack (Female) connector.

Mobile Mark can provide cable assemblies (jumpers) in a variety of cable types and lengths.

Model #	Description
PN17-2400-WHT	17 dBi, Pole mount
PN-WMK	Optional Wall Mount
Supplied with 1-ft RF-195 pigtail cable Jumper cables are also available, built to order.	

Specifications			
Frequency:	2400-2500 MHz	Dimensions:	9" H x 9" W (23 cm x 23 cm)
Gain:	17 dBi	Weight:	2.2 lbs (1 kg)
VSWR Max:	2:1	Mounting:	Adjustable pole mount, and Stainless steel U Bolts
Impedance:	50 Ohm nominal	Bracket:	
Max Power:	20 watts	Pole mount	24° vertical downtilt adjustment 3 7/8" standoff (9.8 cm)
Beamwidth:	24° El, 27° Az	Wall mount (optional)	Up to 45° adjustable range 1 1/4" standoff (3.2 cm)
Front to Back Ratio:	25 dB or better	Cable:	1 ft. LL-195
Lightning Protection:	External recommended	Connector:	N Jack (Female)
Max Wind Velocity:	125+ mph (193 kph)		
Operating Temp:	-40° to +85° C		
Material:	White ASA radome		